

# AEP - Project 3310 Victoria, Texas

PREPARED BY THE VICTORIA ECONOMIC DEVELOPMENT CORPORATION

## LOCATION

Victoria's premium location in the state of Texas puts us within a two-hour drive of Houston, Austin, San Antonio, and Corpus Christi, Texas.

Victoria will play a vital role in the development of the proposed interstate, I-69. The "high-priority corridor" project, designated by the U. S. Congress, has selected Victoria as an intersecting point for two proposed interstate projects to two Rio Grande Valley cities and the Mexico border.

Over 7 million people within a 120 mile radius

Four-lane divided, interstate quality highway with I-69 designation

Major Railways

Regional Airport

Shallow Draft Port

Deep Water Port

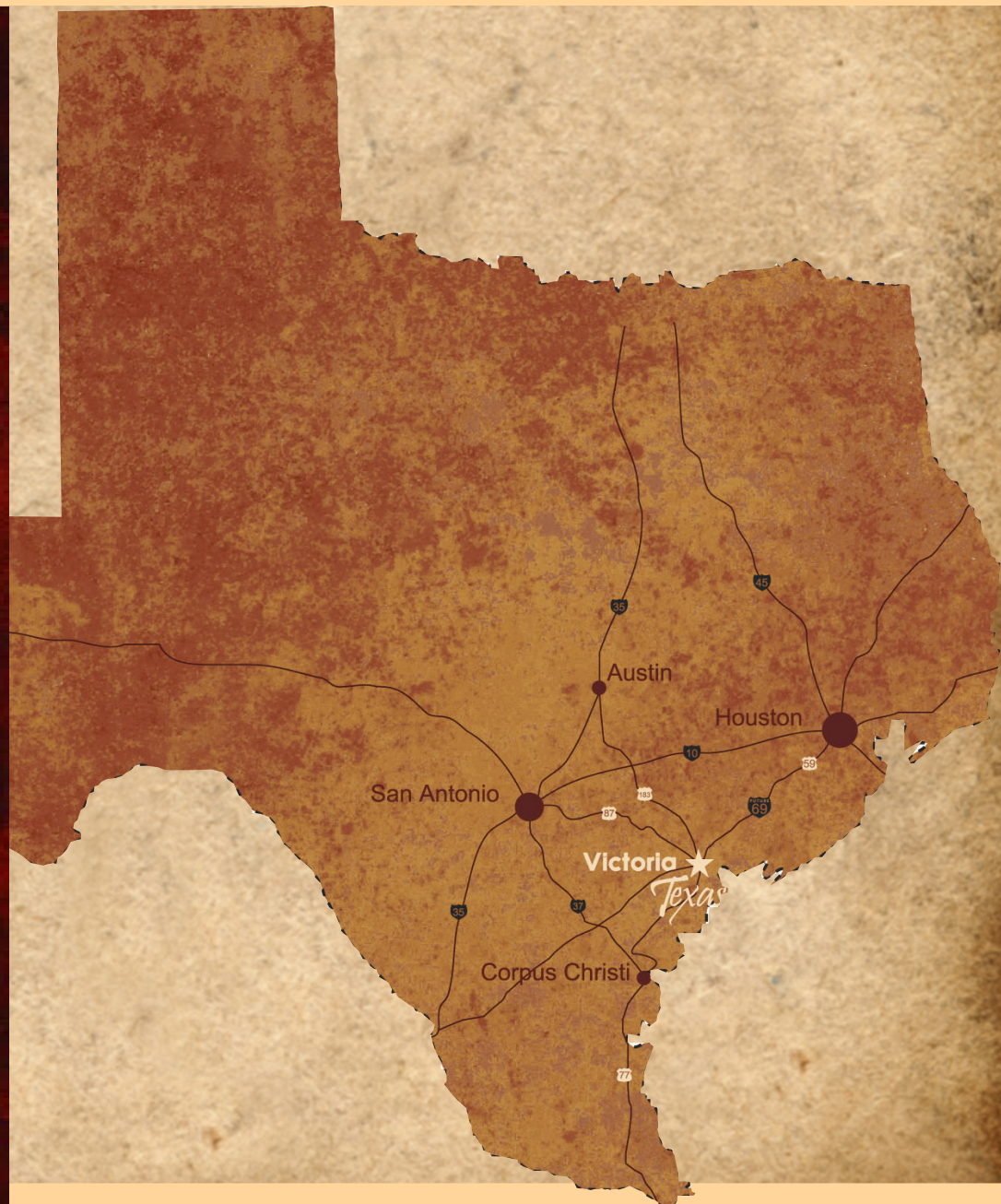
Medical - Retail - Cultural Hub

Victoria College

University of Houston - Victoria

Technical and Vocational Training

Regional draw of over 185,000 people



Victoria Economic Development Corp.  
P. O. Box 7, Victoria, Texas 77902  
361.485.3190 361.485.3195 fax  
www.victoriaedc.com

D. Dale Fowler, CEcD  
President  
dalefowler@victoriaedc.com

Adrian Cannady  
Vice President of Marketing  
adriancannady@victoriaedc.com



August 27, 2012

E. Ray Covey  
AEP Texas, Economic Development and Governmental Affairs  
400 West 15th Street, Suite 1500  
Austin, Texas 78701

Dear Ray:

The Victoria Economic Development Corporation [www.victoriaedc.com](http://www.victoriaedc.com) is pleased to offer for your consideration the Port of Victoria Industrial Park South site.

The **Port of Victoria Industrial Park South** site is situated on 1,580 acres of prime industrial property with frontage on the Victoria Barge Canal. Acreage can be configured as required. The site is bounded by the Victoria Barge Canal and Hwy 185, a 4-lane divided highway. Hwy 185 connects less than 10 miles to U. S. 59 a four-lane, divided, interstate quality highway designated by the U. S. Congress as the Future I-69. One mile of Union Pacific rail intersects the property; a Burlington Northern Sante-Fe spur of less than three miles could offer dual rail service. Industrial water and natural gas are available. A 69kV line runs parallel to the northwest property line; a 138kV electrical transmission line dissects the property. An AEP 345kV transmission line is within 4 miles of the site. Engineering design has been completed on a \$6.5 Million Bulk Cargo Dock at the Port of Victoria Industrial Park South Site. Permitting and design components for a \$4 Million public-private Fleeting Area at the site have been finalized.

**Favorable Business Climate** – Community and regional support for industry is excellent and long-standing. A triad alliance among business, education and local government produces a skilled workforce and a pro-industry/pro-business climate. Economic development and community leaders routinely make personal contact with legislators in both Austin and Washington DC to discuss issues of importance to area industry.

As an example of our commitment to creating a business friendly environment, Victoria has recently adopted **Triple Freeport Tax Exemption** which exempts from ad valorem (property) tax certain types of tangible personal property (i.e., inventory) provided the property is acquired in or imported into Texas to be forwarded out of the state; detained in Texas for assembling, storing, manufacturing, processing, or fabricating purposes by the entity acquiring or importing it; and, is transported out of state within 175 days after the date acquired or imported it into Texas.

To further assist local industry, are working on an alternative site framework that will grant **Foreign Trade Zone** status to any Victoria industrial site.

**Superior Education** – By an almost 2 to 1 margin, Victoria voters approved the **Victoria Independent School District's** bond election for the issuance of \$159 million in bonds to construct new schools and renovate existing campuses across the district. The issuance of bonds paid for two new high schools, a new middle school, two elementary schools, a 1,500-seat fine arts center, a 643-seat aquatic center, construction of a new wing at a middle school, and other improvements across the district. These projects have been completed and are all operational.

Victoria voters approved a \$22 million general obligation bond on May 12, 2012 for construction of a new State-of-the-Art Training Center at the Victoria College. The 80,000 square foot facility will provide customized training for new and existing business and industry in areas such as industrial systems mechanics, machinists, oil and gas technicians, and logistics and operations management. Rapid response labs that can be configured to meet emerging needs, computer labs, welding labs, and flexible use rooms for large-scale corporate training events are just a few of the features the new facility will offer.

E. Ray Covey  
August 27, 2012  
Page -2-

**Regional Labor Benefits** – Victoria County is the regional hub for a 7-county area with a regional draw of over 188,000 people. The area is home to Fortune 100 companies such as Caterpillar, DuPont, INVISTA, Dow-Seadrift Operations, and Formosa Plastics, as well as large medical and financial services companies. The Victoria College has successfully accessed more than \$6.7 Million in training dollars through the state's Skills Development Fund, a program designed to assist businesses throughout the state by providing industry specific training.

**Transportation Advantages** – Uncongested, protected access to interstate quality highways; **designated heavy haul routes**; close proximity to rail, shallow draft and deep water ports along with commercial air service creates a winning combination of transportation advantages for any company looking to maximize their profits.

We believe our extensive list of positive attributes would make a decision to locate in Victoria an easy one, however, our greatest asset is our ability to make your company a part of our community. You may rest assured that we will work to make your move both smooth and profitable, and that's what really what differentiates our community from so many others.

Please don't hesitate to contact me if you require additional information. I look forward to working with you.

Sincerely,



D. Dale Fowler, CEcD  
President

# ABILITY TO MEET KEY CRITERIA

## **40 Acres for Building (if existing building is unavailable)**

The Port of Victoria Industrial Park South site is situated on 1,580 acres of prime industrial property in Victoria County, Texas. Acreage can be configured as required. The site is bounded by approximately one mile of water frontage on the Victoria Barge Canal at the west end of the property and frontage on Hwy 185, 4-lane divided highway at the east end of the property. The site is bounded by Canal Road on the north and by McCoy Road on the south. INVISTA and DuPont (petrochemicals) are adjacent to the property. Less than 2% union employment is reported in the area. Industrial water, electric power, and natural gas are available. Victoria County has air attainment status.

## **Barge Access**

The proposed site is situated directly on the Victoria Barge Canal approximately 2.5 miles south of the shallow draft Port of Victoria. The west end of the site has approximately one mile of water frontage on the canal. Engineering design has been completed on a \$6.5 Million Bulk Cargo Dock at the site. Permitting and design components for a \$4 Million public-private Fleeting Area at the site have been finalized.

## **Rail Access**

Approximately one mile of Union Pacific rail (Class One rail line) intersects the property; a Burlington Northern Sante-Fe spur of less than three miles could offer dual rail service.

## **Estimated Electrical Demand - 5MW**

A 69kV line runs parallel to the northwest property line; a 138kV electrical transmission line dissects the property. An AEP 345kV transmission line is within 4 miles of the site. Area generation includes the coal fired Coletto Creek Power Station; natural gas fired Victoria Power Station; nuclear generation from South Texas Project; and, natural gas and pet coke fired generation from Formosa.

Texas customers have the choice ([www.powertochoose.com](http://www.powertochoose.com)) to purchase electricity from any retail provider registered for their area. With electric competition, most business customers can negotiate freely with retail electric providers. Energy usage and demand characteristics will usually determine negotiated rates. It has been our experience that the most competitive rates can be obtained when the project manager negotiates directly with the retail electric provider.

## **Nearby Proximity to Highway**

The site fronts Hwy 185, a four-lane divided highway which connects less than 10 miles to U. S. 59. U. S. 59 is a four-lane, divided, interstate quality highway designated by the U. S. Congress as the Future I-69. U. S. 59 connects in 60 miles to I-10. Recently enacted legislation allows the Port of Victoria to issue permits for oversized vehicles hauling heavy loads over three important highway segments in Victoria County.

## **Non-union Work Environment**

Texas is a Right-to-Work state. Less than 2% union employment is reported in the Golden Crescent Region (Federal Express, Texas Federation of Teachers, and Alcoa)

---

## **Additional Key Factors**

Victoria's **premium location** within two hours of Houston, San Antonio, Austin, and Corpus Christi, Texas and three hours from the border of Mexico, makes the business of logistics natural. Our transportation network includes four-lane, interstate quality highways with proposed I-69 designation, **heavy haul roads**, excellent rail, inland barge canal, shallow draft port, deep-water port, and a commercial airport.

**Ease of logistics** was a key factor in Caterpillar Inc.'s locating the largest hydraulic excavator manufacturing facility in North America in Victoria, Texas, tripling the company's current capacity. The 1.1 million square foot facility is situated on a 320 acre campus. Production began in mid-2012; employment is expected to top 800.

Victoria, Texas is one of the **most progressive and fastest developing cities in Texas** topping the state statistics in year-over-year job creation for September 2011 according to the Texas A&M University Real Estate Center for Research.

The **Victoria College** is an open admissions two-year community college offering freshman and sophomore academic transfer courses, and a variety of one- and two-year technical training programs. The College has successfully accessed training dollars through the state's Skills Development Fund, a program designed to assist businesses throughout the state by providing industry specific training taught on the main campus and on-site. Victoria voters recently approved a \$22 million general obligation bond for construction of a new State-of-the-Art Training Center at the Victoria College. The 80,000 square foot facility will provide customized training for new and existing business and industry in areas such as industrial systems mechanics, machinists, oil and gas technicians, and logistics and operations management. Rapid response labs that can be configured to meet emerging needs, computer labs, welding labs, and flexible use rooms for large-scale corporate training events are just a few of the features the new facility will offer.

The **University of Houston-Victoria** offers students an opportunity to obtain bachelor's degrees, master's degrees, and professional certification programs in the fields of arts and sciences, business administration, education and human development, and nursing. Student athletes excel in the classroom and on the field in the baseball, softball, soccer, and golf programs.

The **Victoria Fire Department** has primary fire and emergency medical service response in Victoria County including five (5) fire stations with five (5) front-line engines, two (2) front-line aerial ladder trucks and five (5) front-line ambulances.

The **Victoria Police Department** has 116 licensed officers and 39 civilian employees. The **Victoria County Sheriff's Office** has over 160 full-time employees and 20 volunteer reserve officers.

# VICTORIA TEXAS LOCATOR MAP



# PORT OF VICTORIA PROPERTIES

## SPECIAL QUALITIES

Container on Barge Options

Air Quality Attainment Area

Highly Productive Labor Market

Victoria Barge Canal Frontage

Union Pacific Rail

Four-Lane, Divided Highway

350-Foot Transit Dock

775 Linear Foot Liquid Cargo Dock

Rail Near Dock, Warehouse & Storage Facilities

20 Mooring Sites

Lighting for 24-Hour Operations

15 Minutes from City of Victoria

Competitive Tax Abatement Program

No Known Environmental Obstacles

Feedstock/Product Pipelines

Foreign Trade Zone Eligibility

Enterprise Zone

No Significant Wetlands

Victoria Regional Airport

Moderate Climate

No Corporate or Individual Income Tax

Strong and Stable Local Economy

PORT OF VICTORIA

1934 FM 1432

Victoria, TX 77905

361-570-8855

888-290-2952 toll-free

[www.portofvictoria.com](http://www.portofvictoria.com)



## PORT OF VICTORIA INDUSTRIAL PARK SOUTH

1,580 contiguous acres of prime industrial property  
on the Victoria Barge Canal

Engineering design has been completed on a  
\$6.5 Million Bulk Cargo Dock at the site.

Permitting and design components for a  
\$4 Million public-private Fleeting Area at the site have been finalized.

## SPECIAL FEATURES

Inland Waterway Port on Mid-Coast of Texas

Over 15 million Texas Consumers Within Two Hours by Truck

4 lane divided Highway access - Future Interstate 69 Corridor

Union Pacific Rail Spur

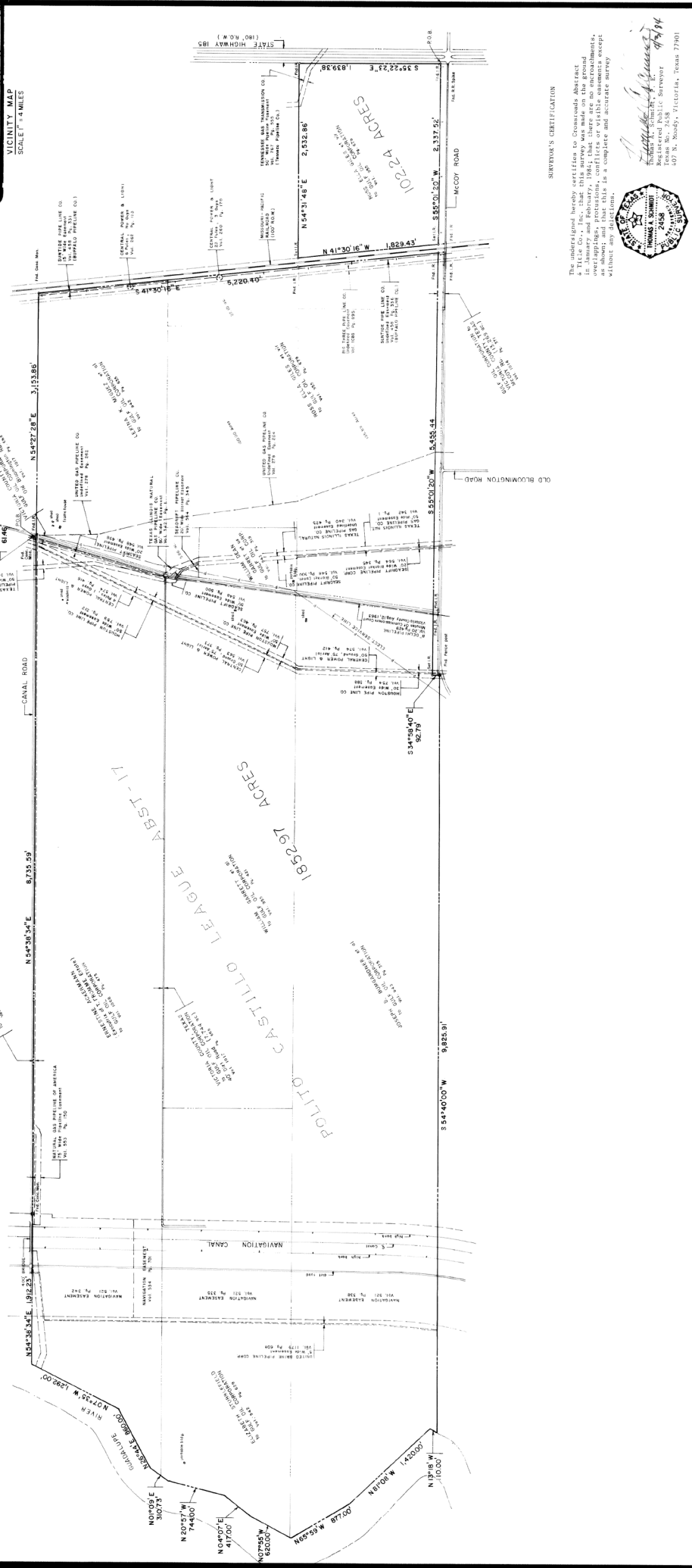
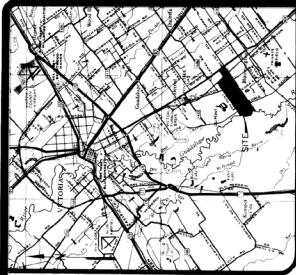
Close access to Gulf Intracoastal Waterway and  
Deepwater Port of Point Comfort

1,800+ Acres of Multi-Use Property with  
Highway, Rail, and Waterway frontage

No State Income Tax - Low Taxes

Industrial Water, Electric Power, and Natural Gas

Air Attainment Area



**SURVEYOR'S CERTIFICATION**

The undersigned hereby certifies to Crossroads Abstract 17, Polito Castillo League Abstract 17, in January and February, 1986; that there are no monuments, monuments, or other visible monuments except as shown and that this survey is a complete and accurate survey without any objections.

*Thomas A. Smith*  
 Registered Public Surveyor  
 No. 2458  
 407 N. Moody, Victoria, Texas 77901

**EXHIBIT 'A'**

**BOUNDARY SURVEY**

**GULF OIL CORPORATION**

1,955.21 ACRES IN THE POLITO CASTILLO LEAGUE ABSTRACT 17,  
 VICTORIA COUNTY, TEXAS.

DESCRIPTION:  
 RECORD D BY: T.A.S.  
 DRAWN BY: R.M.B.  
 CHECKED BY: R.M.B.

JOB NUMBER: V 2195  
 FILE NUMBER: 2195  
 SCALE: 1" = 600'  
 DATE: 1/7/84  
 CROSS NUMBER: 35 Pgs. 46

NO.	DATE	REVISION	BY	APPD.
1				
2				
3				
4				
5				
6				



**URBAN ENGINEERING**  
 VICTORIA, TEXAS



# Topo Map Port of Victoria Industrial Park South



# Victoria Texas Site Locator Map

Victoria Regional Airport  
Daily flights connect to George Bush  
Intercontinental Airport - Houston TX

Caterpillar Hydraulic Excavator  
Manufacturing Facility

U S 59 - A four-lane, divided, interstate  
quality highway designated by U S  
Congress as the Future I-69

Victoria

Port of Victoria  
Shallow Draft Port

Hwy 185 - A four-lane,  
divided highway

Union Pacific Rail

Victoria Barge Canal  
connects in 35 miles to the  
Gulf Intracoastal Waterway

Port of Victoria Industrial Park South  
1,580 Acres



# PORT OF VICTORIA

## SNAPSHOT OF COMMUNITY / SITE ADVANTAGES

### PORT OF VICTORIA

The Port of Victoria is situated on over 2,000 acres and is served by rail and four-lane divided highways. POV Dock No. 1 is a 350 foot transit dock. A lighting system allows for 24-hour cargo operations. There are 20 mooring sites. 17,000 square feet of shed space and over 3 acres of improved ground storage area available. POV Dock No. 2 is an 800 foot string pier available for docking sites and barge repair. Major products transferred are liquid and dry bulk and general and project cargoes. Build-to-Suit options can easily be met by a number of contractors in the region.

Engineering design has been completed on a \$6.5 Million Bulk Cargo Dock at the Port of Victoria Industrial Park South Site. Permitting and design components for a \$4 Million public-private Fleeting Area at the site have been finalized.

2010 improvements at the Port of Victoria include a newly constructed 775 linear foot Liquid Cargo dock which offers the ability to handle larger quantities of bulk liquid cargoes. At 775 feet long, this dock could accommodate more than one barge at a time. Upgrades to improve On-Port Rail Facilities have also been made. Through a Public/Private Partnership, the Port has added an additional 2,200 linear feet of rail near the dock and warehouse and storage facilities. An additional 4,700 linear feet of rail has also been added to accommodate unit trains. This includes a side track for better efficiencies in the switching of rail cars. Roads and drainage on Port property have also been upgraded and the railroad lift bridge has been completely refurbished.

### TRANSPORTATION ADVANTAGES

**WATER** – The Victoria Barge Canal is a 35 mile long waterway that connects the Port of Victoria to the Gulf Intracoastal Waterway (GIWW). The distribution advantage of the canal is its link with the GIWW and the major shipping lines that service ports on the Texas coast as well as the Mississippi River, Ohio River and their connecting canals and river basins.

**RAIL** – The Industrial Park has its own rail spur with rail service provided by Union Pacific Railroad.

**HIGHWAY** – The Port is connected by four-lane divided highways to all major arteries in South Texas: U. S. 59 (Future NAFTA I-69), U. S. 77 and U. S. 87. The location offers easy access to I-10, I-35, and I-37. This network connects Victoria to neighboring cities and to all parts of the United States, Mexico and Canada.



**AIR** – The Port is 13 miles from the Victoria Regional Airport with daily flights to Houston’s George Bush Intercontinental Airport. Four major airports, less than 2 hours from Victoria, provide international connections: George Bush Intercontinental Airport-Houston (IAH) Houston, Texas; Austin-Bergstrom International Airport (AUS) Austin, Texas; San Antonio International Airport (SAT) San Antonio, Texas; and, Corpus Christi International Airport (CRP) Corpus Christi, Texas.

### WORKFORCE AND EDUCATION

- Victoria County is the regional hub for a 7-county area with a regional draw of over 188,000 people
- Over 7 million people live within a 120-mile radius of Victoria, Texas.
- Victoria College and the University of Houston-Victoria are less than 9 miles from the Port of Victoria.

#### Local Training Assistance

Workforce Solutions Golden Crescent (WSGC) tracks and classifies workers in the Golden Crescent Region. To assist in recruiting a skilled / semi-skilled workforce, WSGC will:

- Recruit and pre-screen for qualified job applicants
- Match qualified applicants to job openings
- Provide available space for interviewing and training
- Provide on-line job listings for clients
- Provide customized training
- Provide assessment testing to test applicants for specific job skills and knowledge

# LOCAL AND STATE INCENTIVES

## ***Triple Freeport Tax Exemption***

The City of Victoria, Victoria County, Victoria Independent School District, and Bloomington Independent School District all allow Freeport exemption on certain types of tangible personal property (i.e., inventory) from ad valorem (property) taxation provided the property is:

- Acquired in or imported into Texas to be forwarded out of the state.
- Detained in Texas for assembling, storing, manufacturing, processing, or fabricating purposes by the entity acquiring or importing it.
- Transported out of state within 175 days after the date acquired or imported it into Texas.

## ***Tax Abatement***

The city and county of Victoria have established guidelines for the creation of reinvestment zones and granting tax abatements. Manufacturing, research or regional service facilities, distribution centers or other basic industries are eligible to apply. Economic qualifications include an increase to appraised value of the property equal to or in excess of \$500,000 and creation of a minimum of ten full-time positions. Abatements are granted for up to eight years.

## ***4B Sales Tax Corporation Grants***

Selected use of 4B Sales Tax Corporation funds may be available for qualifying businesses in support of capital investment in real property or added infrastructure. The amount of the grant is dependent upon the company investment, job creation, and payroll.

## ***Training Programs***

The college and university in Victoria have numerous skills training programs that will support manufacturing/technical operations through leverage of education and training funding programs by our local workforce development board, the Golden Crescent Workforce Development Board. Funding is also available on a competitive basis through the Skills Development Fund.

## ***Enterprise Zones***

Businesses locating in either the City or County Enterprise Zones may be eligible for local and state benefits. To be eligible for state benefits, a business must be nominated by the county and designated by Texas Department of Economic Development as an enterprise project. To obtain benefits as a qualified business, the business must be active in the zone and at least 25% of the new positions must be occupied by persons that are residents of any zone within the county and economically disadvantaged as defined by state law.

## ***State Sales and Use Tax Refunds***

An enterprise project is eligible for a maximum of a \$1.25 million (\$250,000 per year over 5 years) refund for state sales and use taxes paid for building materials and machinery and equipment (including office equipment, computers, desks, etc.). The refund is based on the rate of \$2,500/job. Receipts for purchasers of building materials and machinery and equipment and payroll information are required to be retained as part of the audit process. (Note: All contracts should separate the costs for building materials and/or equipment from the costs of labor and services in order to be eligible.)

## ***Manufacturing Equipment Exemption***

Qualified manufacturing equipment and machinery, whether inside or outside of a State-designated Enterprise Zone, will be 100% exempt from state and local sales tax paid on purchases of qualified machinery and equipment. Machinery or equipment must be used directly in the manufacturing, processing, fabrication, or repair of tangible personal property to be sold.

## ***Foreign Trade Zone***

FTZ #155, located in Victoria and Calhoun counties, offers multiple, general purpose and sub-zone sites throughout a 1,400 acre area. Foreign and domestic merchandise generally considered to be in international commerce can be moved into an FTZ without formal U. S. Customs entry or payment of Customs duties or excise tax. If the final product is imported into the U. S., Customs duty and excise taxes are due when the final product leaves the FTZ and formally enters the U. S. No customs duty or excise tax is levied if the final product is exported from the U. S.

## ***Texas Capital Fund***

The Texas Capital Fund program provides loans and grants to non-entitlement communities on behalf of businesses that hire 51% low-and-moderate-income persons. Businesses locating in Victoria County may be eligible to request that the county make an application on their behalf. Selection for Texas Capital Fund assistance is a competitive process. Program funds are awarded through the Texas Department of Agriculture.

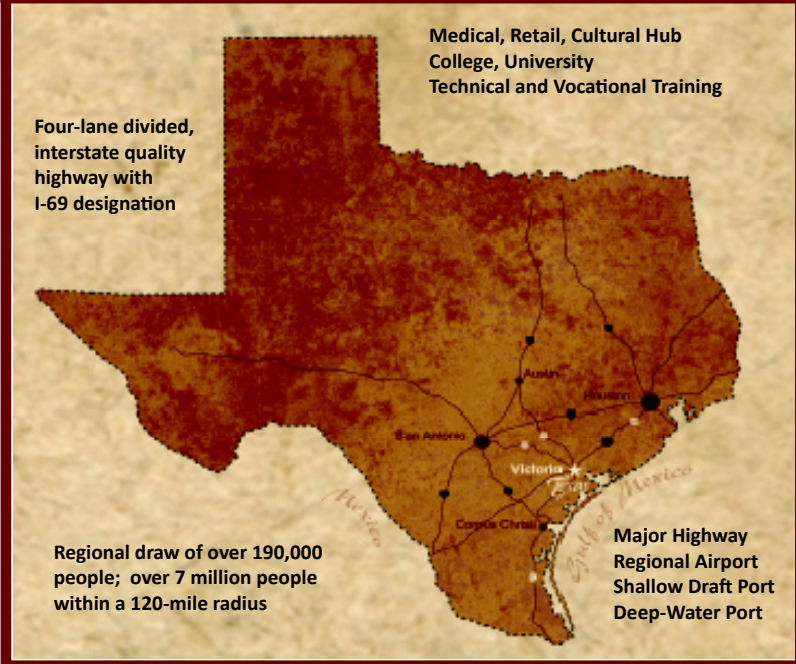
[www.agr.state.tx.us](http://www.agr.state.tx.us)

## ***Texas Enterprise Fund***

The Texas Enterprise Fund can be used for a variety of economic development projects, including infrastructure development, community development, job training programs and business incentives. To be eligible for Texas Enterprise Fund support, a project must demonstrate a significant return on the state's investment and strong local support. The review process will consider a variety of factors associated with each project, including job creation and wages, capital investment, the financial strength of the applicant, the applicant's business history, analysis of the relevant business sector, and public and private sector financial support.

[www.governor.state.tx.us/divisions/ecodev/ed\\_bank/tefund](http://www.governor.state.tx.us/divisions/ecodev/ed_bank/tefund)

# VICTORIA, TEXAS



## Location

Victoria's premium location in the state of Texas puts it within a two-hour drive of San Antonio, Houston, Corpus Christi, and Houston, Texas. **Victoria's location will play a vital role in the development of the proposed interstate, I-69. The "high-priority corridor" project, designated by the U. S. Congress, has selected Victoria as an intersecting point for two proposed interstate projects to two Rio Grande Valley cities and the Mexico border.**

## Transportation

**Highways** - Three major U.S. highways meet in Victoria.

**U. S. Highway 59 (Future I-69)** a four-lane, divided, interstate-quality highway, extends southwest of Victoria to Laredo, and northeast to Houston where it meets I-10 and I-45. U.S. 59 has been designated by the U. S. Congress as a "high priority corridor" which will facilitate its development into the NAFTA Superhighway, I-69.

**U. S. Highway 77** travels north from Victoria to the Dallas-Fort Worth metroplex intersecting I-10, I-35 and I-37. U.S. 77 travels south via a four-lane divided highway to the Rio Grande Valley.

**U. S. Highway 87** travels northwest connecting Victoria with San Antonio and providing access to I-35. U.S. 87 also connects Victoria with Port Lavaca to the southeast.

## Rail

Union Pacific Railroad (UP) is the primary operator of the rail lines in Victoria County. Two other rail companies, Burlington Northern Santa Fe (BNSF) and Kansas City Southern (KCS) have track rights to operate on the UP lines.

## Regional Airport

Victoria Regional Airport offers commercial service with connecting flights to George Bush Intercontinental Airport/Houston. There are multiple air freight services to Victoria with one service on site specializing in hot shot service for auto parts to major US manufacturers. Four international airports are within a 2-hour drive of Victoria: George Bush Intercontinental Airport/Houston (IAH) Houston, Texas; Austin-Bergstrom International Airport (AUS) Austin, Texas; San Antonio International Airport (SAT) San Antonio, Texas; and, Corpus Christi International Airport (CRP).

## Motor Freight

More than 50 trucking companies serve the Victoria region. These general trucking, motor freight carriers, heavy hauling, and liquid/dry bulk carriers can cost effectively move your products.



Victoria Regional Airport

## Port Access

The Port of Victoria Industrial Park South site fronts approximately 5,240 feet along the Victoria Barge Canal which extends to the shallow draft Port of Victoria ([www.portofvictoria.com](http://www.portofvictoria.com)). The Intracoastal Waterway, 35 miles to the south, connects the site to all of the deep-water ports on the Gulf Coast and to the entire 14,000-mile Inland Waterway System, including the Mississippi and Ohio River Systems and the Atlantic Coastal States. The sea-level waterway channel has a 12-foot depth the entire length of the canal and horizontal clearance to 125 feet. Additional barge slips have been added to expand service capability. The Port of Victoria and the Port of Houston Authority have signed a Memorandum of Understanding to develop and expand the distribution synergies of this region which includes a “container on barge” project providing the ability to move freight via barge between the Ports of Houston and Victoria.

Deep-water transit options are available within 125 miles through these sources:

**The Port of Port Lavaca - Point Comfort** -- a deep-water port with a 36+ foot ship channel and unlimited overhead clearance. Located just 30 miles from Victoria, the port has \$100 million in waterfront improvements designed for cargo handling efficiency and safety. The port is accessible by rail and highway and offers handling for break bulk, containerized, heavy-lift, dry bulk and bulk liquid cargoes.

**The Port of Corpus Christi**

**The Port of Houston**

## Utilities

Texas companies are exempt from paying state sales and use tax on both electricity and natural gas used in manufacturing, processing, or fabricating tangible personal property.

### Electricity

Texas customers have the choice ([www.powertochoose.com](http://www.powertochoose.com)) to purchase electricity from any retail provider registered for their area. With electric competition, most business customers can negotiate freely with retail electric providers. Energy usage and demand characteristics will usually determine negotiated rates. It has been our experience that the most competitive rates can be obtained when the project manager negotiates directly with the retail electric provider.

### Natural Gas

CenterPoint Energy, provides natural gas to Victoria and the surrounding area.

## Environmental

Victoria County has air attainment status. The Texas Commission on Environmental Quality determines permitting requirements based on specific site and industrial process. No limiting factors are anticipated at proposed sites. The Office of the Governor and the Victoria Economic Development Corporation will be available to assist with any and all permitting issues.

## Zoning

There is no zoning in the City or County of Victoria, Texas; however, this site is located in an industrial neighborhood and is recognized and proposed for use as a manufacturing/industrial site.

## Taxes

### *Ad Valorem (Property) Tax*

Texas has no state property tax. Local governments and special taxing districts levy taxes on real and tangible personal property. All property is appraised at full market value, and taxes are assessed by local county assessors on 100% of appraised value.

### *Income Tax*

Texas has no personal or corporate income tax. A state franchise tax applies to all corporations with representation in Texas.

### Victoria Property Tax Rate 2011-2012

City of Victoria	.6500
Victoria County	.3436
The Victoria College	.1531
Victoria ISD	1.3226
Road & Bridge	.0550
Victoria Navigation District	.0304
Victoria County Drainage District #3	.0381
<u>Victoria County Ground Water District</u>	<u>.009460</u>

**Total Effective Rate                      \$2.60226/\$100**

Source: Victoria County Tax Assessor

### ***Payroll Costs***

Businesses that employ one or more individuals may be subject to the state unemployment tax. New employers pay a tax rate of 2.7% of the first \$9,000 of each employee's annual compensation. The minimum effective tax rate for 2011 is .78% and the maximum effective tax rate is 8.25%.

### ***Franchise Tax***

The Texas franchise tax is a privilege tax imposed on each corporation and limited liability company chartered/organized in Texas or doing business in Texas. For franchise tax purposes, the term 'corporation' also includes a bank, state limited banking association, savings and loan association, limited liability company, professional limited liability company, a corporation that elects to be an S corporation for federal income tax purposes, and a professional corporation.

### ***Sales & Use Tax***

The state levies a sales and use tax of 6.25% on sales of tangible personal property and certain services. The City of Victoria and Victoria County add an additional sales tax of 2.0% making the total combined rate of 8.25%. There are exemptions for groceries, medicine, property for resale, manufacturing equipment and many items used exclusively on farms and ranches for food production.

## **Community Support**

Community and regional support for industry is excellent and long-standing. Industry already located in the area enjoys an excellent public image and strong support. There have been no opponents to industrial development nor are there active environmental groups in Victoria. Local manufacturers report that labor productivity levels at their Victoria plants are among the highest in their companies. Examples of community support follow:

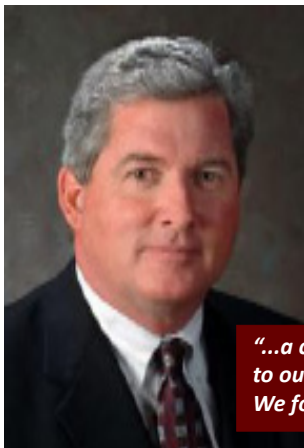


"DuPont has been in Victoria for over 50 years. We believe the Victoria community has been an asset to our businesses. When we site plants, we take into consideration all the expected concerns about business climate and infrastructure. We also look carefully at the spirit of the local community. Are the people proud of their community? Do they have a solid work ethic? Are they progressive and flexible; able to change with the times and adjust to new challenges and seize new opportunities? To DuPont - Victoria has been all of this."

Charles O. Holliday, Jr.

*Former DuPont chairman and chief executive officer.*

***"...progressive and flexible; able to change with the times and adjust to new challenges and seize new opportunities... Victoria has been all of this."***



"When **Exelon Nuclear** was looking for a potential location to build a new nuclear power plant, we looked for a community that would embrace industry, local officials who were responsive to our needs and people who knew how to get things done in a professional manner. We wanted to be partners with that community. We found all these things in Victoria."

Chris Crane

*President & COO, Exelon Corp.*

*Chicago, Illinois*

***"...a community that would embrace industry...responsive to our needs...people who knew how to get things done... We found all these things in Victoria."***

# Labor Market - Victoria MSA and the Golden Crescent Region

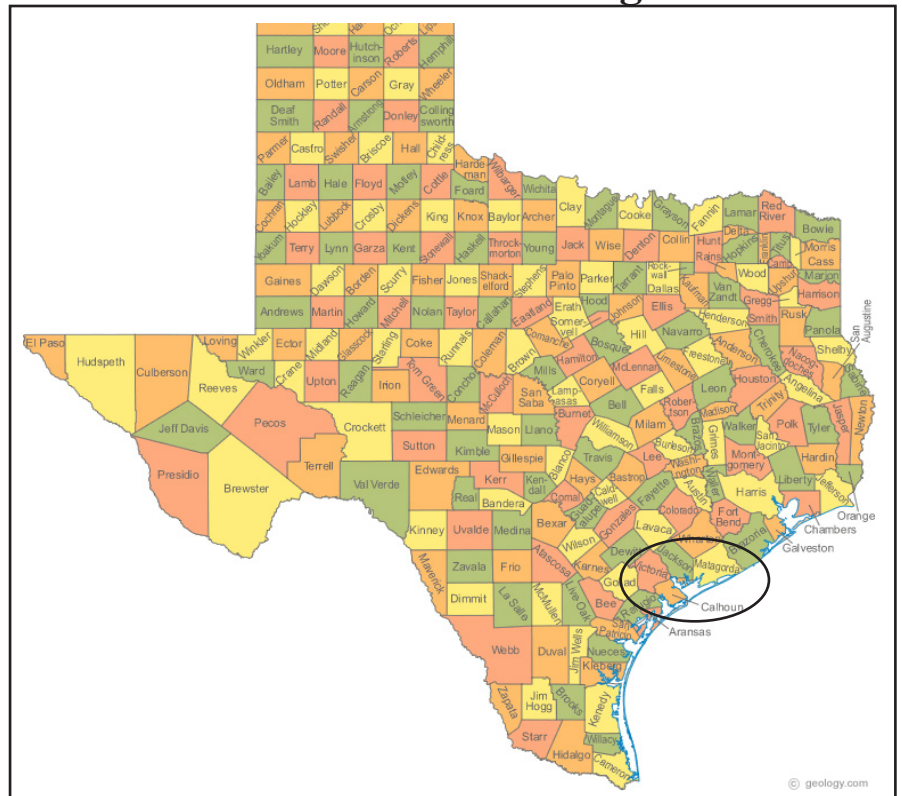
Three counties make up the Victoria MSA - Victoria, Goliad, and Calhoun counties.

Victoria County is a hub for the larger 7-county Golden Crescent Region which is comprised of Calhoun, DeWitt, Goliad, Gonzales, Jackson, Lavaca, and Victoria counties.

Skilled workers, an ample labor force, in-place job training programs, and a strong work ethic meet prospective companies when they enter the Victoria market. Regional employers boast that our local plants are the most productive within their corporate families.

Texas is a right-to-work state.

Less than 2% union employment is reported in the Golden Crescent region which draws more than 185,000 employees from a 50-mile radius.



## Golden Crescent Workforce Area Employment Figures July 2012

Area	Total Population	Civilian Labor Force	Employed	Unemployed	% Rate
Calhoun	21,381	10,403	9,598	805	7.7
DeWitt	20,097	10,088	9,495	593	5.9
Goliad	7,210	3,665	3,450	215	5.9
Gonzales	19,807	10,643	10,073	570	5.4
Jackson	14,075	7,448	6,987	461	6.2
Lavaca	19,263	10,431	9,882	549	5.3
Victoria	86,793	47,550	44,624	2,926	6.2
Total	188,626	100,228	94,109	6,119	6.1

## Population - 2010 Census

Golden Crescent Region		By Age Group - 2010 Census				Ethnicity - 2010 Census		
County	Population	20/24	25/34	35/34	55+	White	Hispanic	Black
Calhoun	21,381	5.6	11.4	26.2	27.5	81.5	46.4	2.6
DeWitt	20,097	4.6	10.8	27.8	31.8	75.7	32.4	9.3
Goliad	7,210	3.8	8.3	27.3	35.3	83.7	34.1	4.8
Gonzales	19,807	6.0	11.6	25.7	27.2	71.5	47.2	7.4
Jackson	14,075	5.2	11.6	25.7	35.9	81.3	29.0	7.0
Lavaca	19,263	4.2	9.5	25.3	35.9	86.0	16.0	6.8
Victoria	86,793	6.3	12.8	26.1	25.2	79.5	43.9	6.4
Totals	188,626							

Source: U.S. Census Bureau

# Labor Market - Employment and Wages

The Victoria area is home to Fortune 100 companies such as Caterpillar, DuPont, INVISTA, Dow-Seadrift Operations, and Formosa Plastics, as well as large medical and financial services companies. A triad alliance between business, education and local government produces a skilled workforce and a pro-business climate. Employees in the area are encouraged to further their job skills by attending employer-sponsored courses at either the Victoria College or the University of Houston - Victoria. Texas is a right-to-work state. Less than 2% union employment is reported in the Golden Crescent region which is comprised of Calhoun, DeWitt, Goliad, Gonzales, Jackson, Lavaca and Victoria counties. The Golden Crescent draws more than 188,000 employees from this 50-mile radius.

## Victoria Area Major Employers

Source VEDC, February 2012

Victoria ISD.....	2,165.....	Education	Goliad ISD.....	221.....	Education
The Intoplast Group.....	1,975.....	Plastic Products	Performance Food Group.....	220.....	Food Distribution
Formosa Plastic.....	1,663.....	Petrochemical / Plastics	South Texas Electric Co-op.....	220.....	Utilities
Citizens Medical Center.....	1,127.....	Hospital	Berry Plastics.....	210.....	Plastics
DeTar Healthcare System.....	939.....	Hospital	Gonzales Healthcare System.....	202.....	Hospital
DOW-Seadrift Operations.....	600.....	Petrochemical	Edna ISD.....	197.....	Education
INVISTA.....	600.....	Petrochemical	Walmart SuperCenter.....	190.....	Department Store
Ranstad.....	600.....	Teleservices	Texas Concrete.....	174.....	Concrete
ALCOA.....	599.....	Aluminum / Alumina	Seadrift Coke.....	162.....	Needle Coke
Calhoun ISD.....	597.....	Education	Memorial Medical Center.....	161.....	Hospital
Victoria County.....	580.....	Government	Industrial ISD.....	156.....	Education
City of Victoria.....	569.....	Government	Exterran.....	151.....	Oil/Gas Production Svcs
Cuero ISD.....	500.....	Education	Gulf Bend Center.....	150.....	Social Services
Gonzales ISD.....	414.....	Education	J.C. Penney.....	150.....	Department Store
Kaspar Wireworks.....	413.....	Metalworks / Plating	Turner Industries.....	148.....	Contract Labor
Orion Marine Group.....	386.....	Construction / Dredging	Fordyce.....	140.....	Sand & Gravel
Pioneer Natural Resources.....	359.....	Oil & Gas Production	INEOS Nitriles.....	134.....	Petrochemical
University of Houston-Victoria.....	358.....	Education	Victoria Advocate.....	133.....	Newspaper
H.E.B.....	329.....	Grocery	Bloomington ISD.....	124.....	Education
First Victoria National Bank.....	285.....	Financial	Atzenhoffer Chevrolet.....	120.....	Auto Dealership
Mount Vernon Textiles.....	284.....	Textiles	Boedeker Plastics.....	116.....	Plastic Products
Victoria College.....	283.....	Education	American Electric Power/CPL.....	110.....	Utility
TX Dept. of Criminal Justice.....	262.....	Government	Victoria Air Conditioning.....	106.....	Installation / Service
Devereux-Victoria.....	260.....	Social Services	Wells Fargo Bank.....	104.....	Financial
H.B. Zachary.....	250.....	Construction	Maverick Engineering.....	100.....	Engineering Services
Cuero Community Hospital.....	239.....	Hospital			

**Texas is a Right-to-Work State.**

**Less than 2% union employment is reported in the Golden Crescent Region.**

### Average Hourly Wage - 2012

Administrative Assistant.....	\$18.89	Electricians.....	\$21.89	Plumber/Pipefitter.....	\$20.32
Assemblers & Fabricators.....	\$11.48	Forklift Operator.....	\$11.15	Police Patrol Officer.....	\$21.04
Automotive Mechanic.....	\$17.27	Operating Engineers.....	\$14.89	Painter, Construction.....	\$16.12
Bookkeeping, Accounting.....	\$13.56	Emergency Med. Tech.....	\$14.62	Receptionist.....	\$10.27
Carpenter.....	\$17.52	Heating/AC Mechanic.....	\$15.62	Registered Nurse.....	\$24.58
Computer Programmers.....	\$31.08	Helpers, Production.....	\$9.71	Sales Rep. Wholesale.....	\$24.03
Computer Support Spec.....	\$20.20	Lic. Practical Nurse.....	\$17.26	Supervisor, Construction.....	\$25.98
Construction Equip. Operator.....	\$14.89	Machinists.....	\$20.13	Supervisor, Production.....	\$29.46
Construction Laborers.....	\$11.20	Maint. Repair General.....	\$11.53	Truck Driver, Light.....	\$13.14
Drafter, Civil.....	\$20.98	Managers, General Function.....	\$40.70	Welder.....	\$16.61

# Education

**The Victoria College** ([www.victoriacollege.edu](http://www.victoriacollege.edu)) is an open admissions two-year community college with a model Workforce Development & Education Center. The College offers a two-year associate of Applied Science Degree in Process Technology or Instrumentation Technology, Drafting Technology and several other fields. The Victoria College has the experience necessary to construct effective workforce development programs as required. For example, to meet the growing need for welders in the area, the Victoria College along with the local Workforce Development Center and several local employers formed a partnership for the purpose of developing a new welder-training program. The 16-week fast track program now produces entry-level welders who are ready for more specific on-the-job training.

Students pursuing virtually any major may begin at VC and then transfer their credits to upper-level institutions to continue their education. Each semester, hundreds of VC students transfer their credits to such well-known schools as Texas A&M University, University of Texas at Austin, Southwest Texas State University, Sam Houston State University and the University of North Texas, while many others choose to stay close to Victoria and attend the University of Houston-Victoria, located next to the VC campus.

**The University of Houston-Victoria** ([www.uhv.edu](http://www.uhv.edu)) In June 2009, Gov. Rick Perry signed into law the expansion of UHV's Junior/Senior Program to a full four-year university. Freshman/Sophomore classes began in 2010. The University offers degree programs in education, business administration and specified areas of the arts and sciences, including Biology and Information Science. The University's bachelor's and master's programs have international certification from the Association of Advance Collegiate Schools of Business, known as AACSB International.

Students enrolled in courses at UHV benefit from the institution's use of technology. To increase student awareness and proficiency with technology, UHV provides current news and updates, an orientation to online learning at UHV, along with a variety of other student support services, such as WebCT support, tutoring, and library support. UHV online courses use WebCT, a course management system. All fully online courses use WebCT Vista. The Vista orientation includes computer requirements, along with Vista tutorials.

Faculty are instrumental to the expanding use of technology at UHV. Instructional Support Services continually researches and implements new technology and learning tools. The Online Learning Center provides current news and updates about the use of technology in academics, along with current online course design research and resources, including instructional strategies, best practices, and copyright and accessibility information. Quality course design is facilitated through personalized training, design consultation, and media development.

## Training Assistance

Local and state institutions leverage most education and training programs. The Victoria College, University of Houston-Victoria, the Tech Prep Partnership, and Texas Vocational School graduates thousands of students each year that can provide a labor force reinforced with customized training skills. Federal funds are available annually for training services to disadvantaged, unskilled and dislocated workers. The Texas sponsored Skills Development Fund is administered locally through Texas Workforce Solutions of the Golden Crescent.

### Texas Workforce Solutions of the Golden Crescent

The Texas Workforce Solutions of the Golden Crescent is committed to assisting all local and potential employers with training assistance. The Texas Workforce Solutions of the Golden Crescent, reaches out to all of Golden Crescents' more than 4,000 employers through a wide range of services, including assistance with recruiting, retention, training and retraining, and outplacement services, as well as available information on labor law and labor market statistics.

### The Victoria College

The Victoria College has successfully accessed training dollars through the state's Skills Development Fund, a program designed to assist businesses throughout the state by providing industry specific training. In partnership with public community, technical colleges and a higher education extension agency, the Skills Development Fund will assist in financing customized job training programs to fit the express needs of Texas businesses.

### College Enrollments

Spring 2012	
The Victoria College	4,213
University of Houston-Victoria	4,183

Source: Victoria College, UH-V

# Incentives

## Financial Assistance

The Victoria Sales Tax Development Corporation has a history of providing incentives to encourage economic development. The amount of the incentive is based on the capital investments as well as the number and wages of the jobs created.

## Tax Abatement Program

The city and county of Victoria have established guidelines for the creation of reinvestment zones and granting tax abatements. Manufacturing, research or regional service facilities, distribution centers or other basic industries are eligible to apply. Economic qualifications include an increase to appraised value of the property equal to or in excess of \$500,000 and creation of a minimum of ten full-time positions.

## Triple Freeport Tax Exemption

The City of Victoria, Victoria County, Victoria Independent School District, and Bloomington Independent School District all allow Freeport exemption on certain types of tangible personal property (i.e., inventory) from ad valorem (property) taxation provided the property meets import/export criteria.

## Training Assistance

Local and state institutions leverage most education and training programs. The Texas Workforce Solutions of the Golden Crescent is committed to assisting all local and potential employers with training assistance. Victoria College has successfully accessed training dollars through the state's Skills Development Fund and partners with companies to provide industry specific training.

## Foreign Trade Zone

Foreign Trade Zone No. 155 is located in Calhoun and Victoria counties and is managed by Calhoun-Victoria Foreign Trade Zone Inc. It offers operational and financial benefits to reduce operating costs associated with a U.S. location. Specifically, both foreign and domestic cargoes can be moved into the FTZ without formal Customs entry, without payment of duties or excise taxes, and without inclusion in quotas or other import restrictions. A zone user is able to avoid ad valorem taxes on all merchandise in the zone that is of foreign origin or which is destined for export.

## Manufacturing Equipment Exemption

Qualified manufacturing equipment and machinery, whether inside or outside of a State-designated Enterprise Zone, is 100% exempt from state and local sales tax paid on purchases of qualified machinery and equipment. Included in the criteria is that the machinery or equipment be used directly in the manufacturing, processing, fabrication, or repair of tangible personal property to be sold. These exemptions are based on compliance with statutes administered by the Texas Comptroller of Public Accounts. The business files a certificate of exemption with the State Comptroller's office to receive the exemption.

## Texas Enterprise Zone Program - Project Benefit Summary

The Texas Enterprise Zone (EZ) Program provides State Sales & Use Tax benefits to targeted businesses. Select companies can receive from \$2,500 to \$7,500 in sales tax refunds per job they create and/or retain, depending on the amount of capital investment made at the project location.

The following is an example of the state incentives a business may be eligible to receive, if designated an enterprise project:

### **State Sales & Use Tax Refund (up to \$1,250,000 over a 5-year period)**

The refund is \$2,500 per job created and/or retained during a 5-year period. Eligible items include purchases of: equipment, machinery, building materials, labor for remodeling, rehabilitating, or constructing a structure, electricity and natural gas for use at the project location.

EXAMPLE: 100 new jobs x \$2,500 refund/job = \$250,000 potential refund\*

*\*The refund is also determined by the amount of State Sales & Use Tax paid to the State. The maximum state sales and use tax refund allowed annually is \$250,000.*

The EZ program allows communities to participate in the program by establishing the intent to participate in the program and nominating a new or expanding business for state and local incentives. Through the nomination, a community may provide for the capture of various state and local benefits for businesses who expand or relocate to their community. State incentives are available to enterprise projects in the form of a refund of *state sales and use taxes* paid from \$2,500 to \$7,500 for each new permanent job created and/or retained, the enterprise project commits to create or retain in its application during the five-year designation period.

# LABOR SHED

(90,000 within a 45 minute commute)

SOC - Description	Employment*	Recent Grads**	Related ***	Total
11-1011 Chief Executives	366	12,574	390	13,330
11-1021 General and Operations Manager	1120	12,330	390	13,840
11-3051 Industrial Production Managers	224	11,381	1220	12,825
19-4031 Chemical Technicians	392	63	472	927
43-1011 First-Line Supervisors of Office & Admin. Support Workers	1098	13	2380	3491
43-5032 Dispatchers, Except Police, Fire, & Ambulance	623	N/A	6470	7093
43-5071 Shipping, Receiving, & Traffic Clerks	1563	N/A	13,400	14,963
43-5081 Stock Clerks & Order Fillers	3953	5	14,390	18,348
43-9021 Data Entry Keyers	1429	22	2340	3791
49-9041 Industrial Machinery Mechanics	1175	N/A	2650	3825
51-1011 First-Line Supervisors of Production & Operating Workers	872	218	3230	4320
51-4023 Rolling Machine Setters, Operators, Tenders, Metal & Plastics	130	N/A	7120	7250
51-4023 Exp. Rolling Machine Setters, Operators, Tenders, Metal/Plastic	130	N/A	---	130
51-4041 Machinist	454	N/A	320	774
51-4051 Metal-Refining Furnace Operators and Tenders	43	N/A	3040	3083
51-4052 Pourers and Casters, Metal	33	N/A	2450	2483
51-4071 Foundry Mold and Coremakers	2	N/A	7	9
51-4111 Tool and Die Makers	42	N/A	8670	8712
51-8091 Chemical Plant and System Operators	2041	16	530	2587
51-9061 Inspectors, Testers, Sorters, Samplers, and Weighers	833	2	7290	8125
53-4013 Rail Yard Engineers	33	N/A	36	69
53-7021 Crane and Tower Operators	63	N/A	97	160
53-7021 Exp. Crane and Tower Operators	63	N/A	---	63
53-7051 Industrial Truck and Tractor Operators	1678	N/A	6190	7868
53-7064 Packers and Packagers, Hand	854	N/A	6540	7394

\*The Employment figures are taken from the persons employed in that occupation across all industries within the indicated area, including the TWC Applicant transactions figures covering the most recent BLS reporting period, as well as TWC 2008-2018 projections.

\*\*The Recent Graduates figures represent most recent graduates from related programs, based on a SOC-to-CIP (Catalog of Instructional Programs) crosswalk from training provider(s) within defined labor shed for technical/vocation programs or regionally for 4 year grads.

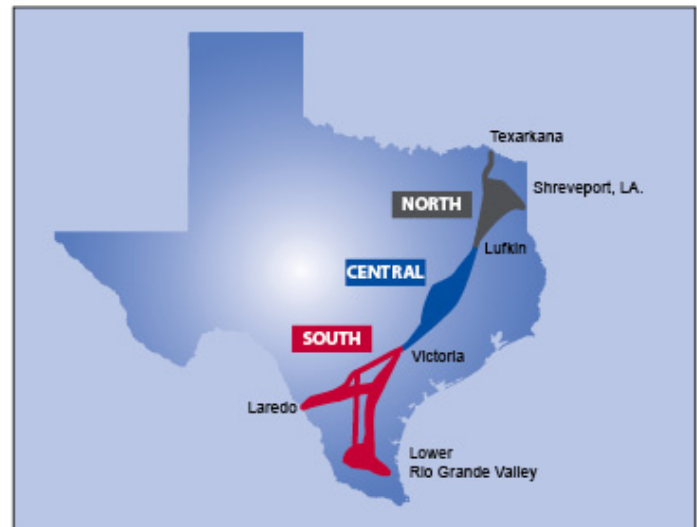
\*\*\*The Related Employment figures are taken from a version of an O\*NET-based Knowledge, Skills and Abilities match-



# Interstate 69

## The Texas Route to Trade

**Interstate 69**, a national highway project, will be a new 1,600-mile facility that connects Mexico, the United States and Canada. Once completed, I-69 will extend from Port Huron, Michigan to the Texas/Mexico border. As a future interstate, it will improve safety and mobility and provide an efficient movement of people and goods.



*“I-69 is the best new Interstate choice for U.S./Mexican trade because it most directly connects top border-crossing ports with top trading states.”*

~ Texas Department of Transportation ~

### TOP I-69 FACTS

- I-69 is the combination of two federally designated High Priority Corridors. Corridor 18 extends from Michigan and Illinois south through Indiana, Kentucky, Tennessee, Mississippi, Arkansas, Louisiana and terminating at the terminus of U.S. 77 and U.S. 281 in the Rio Grande Valley of Texas. **Corridor 20 is designated as *the existing U.S. 59* from Texarkana to Laredo.**
- I-69 will be the shortest route between the industrial northeast and the South Texas border with Mexico.
- 22 of the nation’s top 25 seaports are directly connected to the I-69 corridor.
- 16 of the nation’s top air cargo airports are readily accessible by the I-69 corridor.
- All totaled I-69 corridor states and the states using I-69 and its border crossing ports account for nearly 63% of total U.S. truck-borne trade with North America. When completed no other highway will come close to matching I-69 for trade volume and service efficiency.
- I-69 border crossing ports from Laredo to Brownsville, Texas handle 49.0% of total U.S. truck-borne trade with Mexico.
- I-69 corridor states account for 51% of U.S. truck-borne trade with Mexico.



*I-69 border crossing ports in Michigan handle 46.6% of total U. S. truck-borne trade with Canada.*



*I-69 border crossing ports in Texas from Laredo to the Gulf of Mexico handle 49.1% of total U. S. truck-borne trade with Mexico.*

# VICTORIA'S EMPHASIS ON EDUCATION AND WORKFORCE GUARANTEES A POOL OF TALENT WILL BE AVAILABLE TO LOCAL COMPANIES.

By an almost 2 to 1 margin, Victoria voters approved the **Victoria Independent School District's** bond election for the issuance of \$159 million in bonds to construct new schools and renovate existing campuses across the district. The issuance of bonds paid for two new high schools, a new middle school, two elementary schools, a 1,500-seat fine arts center, a 643-seat aquatic center, construction of a new wing at a middle school, and other improvements across the district. These projects have been completed and are all operational.

Victoria Independent School District has led the way in developing curriculum that goes beyond basic academics. The business community partners with school personnel to develop local standards in addition to national and state standards.

Courses of study at VISD magnet school campuses are enhanced through advanced technology, in-depth experiences, and field learning activities that are designed to nurture every child's imagination and celebrate cultural and ethnic diversity.

A career and technology center offers vocational training in 12 areas including electronics, building trades, computer networking, cosmetology, and Process Operation Technology for petrochemical plants.

Victoria's private schools offer young men and women the opportunity to excel in

academics, athletics and fine arts in a nurturing atmosphere. Advanced Placement courses augment traditional academic and honors courses. State-of-the art technology, complemented by extracurricular activities, offer unique opportunities for personal, physical, and social development.

More than 60 colleges and universities are located within a 125-mile radius of Victoria including the University of Texas, Texas A&M University, Rice University and the University of Houston. Some of the nations premier research facilities are located on these campuses. For those students wanting a quality education closer to home, it's a short commute to a higher education at The Victoria College and University of Houston-Victoria.

Since 1925, **The Victoria College** has provided high-quality, yet affordable, education throughout the seven-county region.

The Victoria College prepares students for continued university education, trains students in allied health and technical careers, and works through adult education courses to provide enrichment, literacy and workforce skills development. All of these programs are presented to a culturally diverse, multigenerational student population.

The Victoria College's Dual Credit program allows eligible high school students the opportunity to earn college credit as

well as high school credit upon completion of a college course. High school juniors and seniors can take classes on-line, at the College, or via ITV technology.

**The University of Houston-Victoria**  
In 2009 Gov. Rick Perry signed House Bill 1056 which authorized the University of Houston-Victoria (UHV) to expand to include freshman and sophomore level courses in 2010. UHV was originally established as an upper level only institution.

The delivery of freshman and sophomore level instruction at UHV takes place in partnership with Victoria College.

The downward expansion is taking place on the existing UHV campus, until enrollment growth justifies the need for expansion of current facilities.

For three decades, UHV has proudly served the higher education needs of the region through our School of Arts & Sciences, School of Business Administration, and School of Education. Student enrollment exceeds 2,300. Over 6,600 bachelor's and master's degrees have been conferred since the university's founding in 1973.

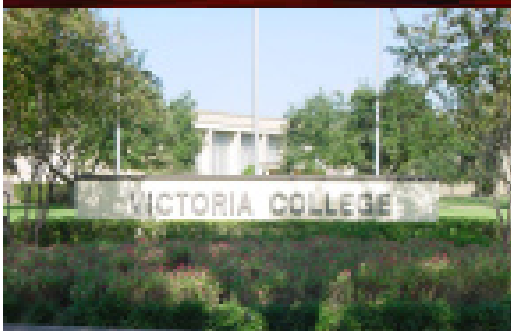
Academic programs are delivered on campus, online, at remote sites in the region, and in collaboration with other UH System universities at two off-campus teaching centers in Fort Bend County.

## EAST AND WEST HIGH SCHOOL RENDITION



<b>Two new high schools:</b>	<b>\$92M</b>
<b>One new middle school:</b>	<b>\$17M</b>
<b>Two new elementary schools:</b>	<b>\$17.5M</b>
<b>Crain Middle School Addition:</b>	<b>\$4.5M</b>
<b>Capital Improvements:</b>	<b>\$19M</b>
<b>District Events Center:</b>	<b>\$9M</b>
<b>Total:</b>	<b>\$159M</b>

## THE VICTORIA COLLEGE



## UNIVERSITY OF HOUSTON-VICTORIA

