

Block Full Width of
Right-of-Way 10' to 14'

West Line of NW 1/4
S01°05'37"E 2648.79' m'd
(Assumed Bearing Basis)
N00°02'16"W 2448.76' rec
S01°05'37"E 2448.79' m'd

ALTA / NSPS Land Title Survey

Retracement Survey Wabash Northeast Business Complex

Part of the NE 1/4 and NW 1/4 of Section 36,
Township 28 North, Range 6 East
Noble Township, Wabash County, Indiana

See Page 4 of 5

NW 1/4 of Section 36

Wabash Northeast Business Complex Section II (Instr. #2012R424624)

Lot #4
45.68± Acres
Instr. #2018K43437
Bunnell Land Surveying & Engineering, LLC
420 North Adams Avenue

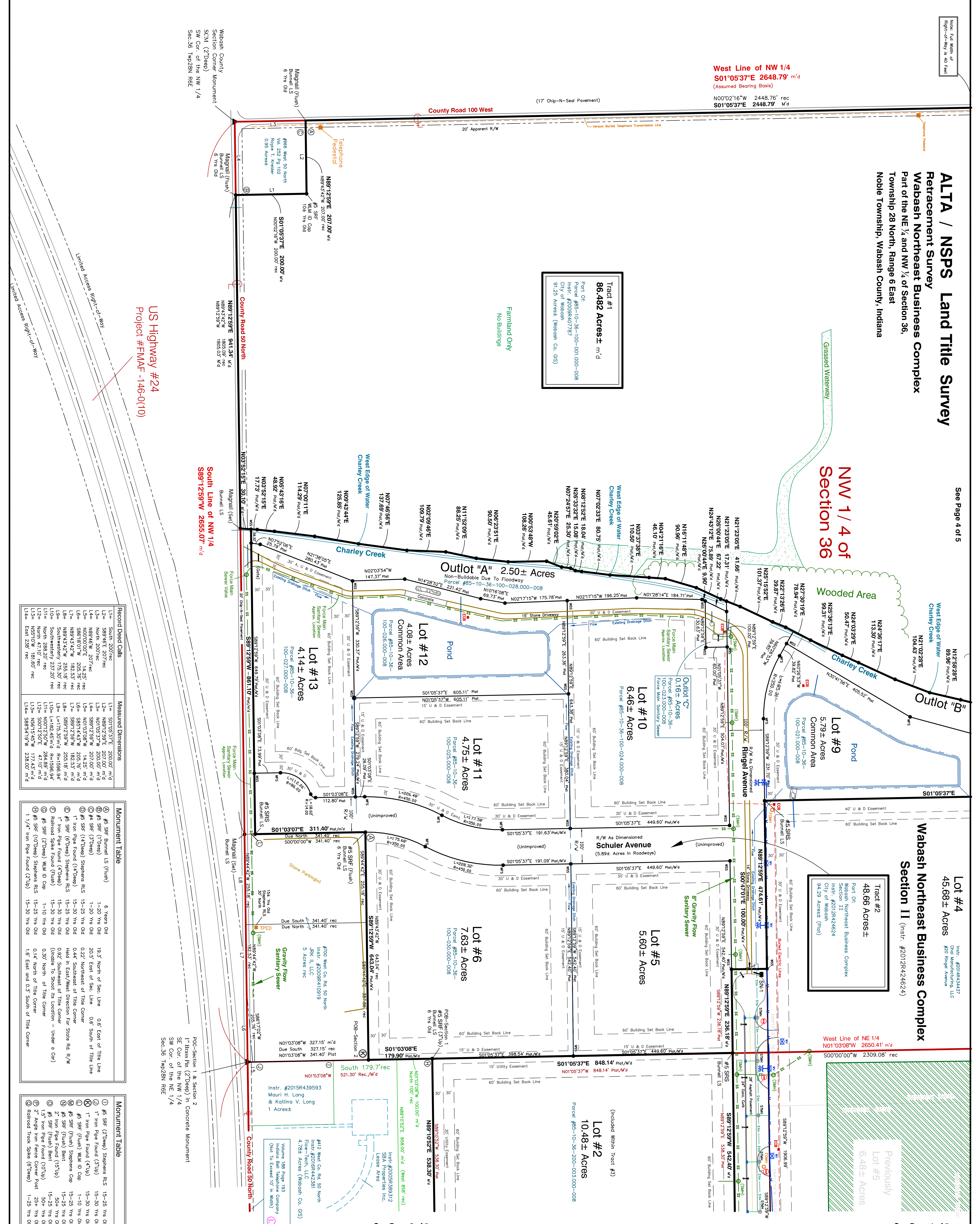
Tract #2
48.66 Acres±
Part Of:
Wabash Northeast Business Complex
Section 1012R424624
City of Wabash
94.25 Acres± (Total)

Previously
Lot #5
6.48± Acres

Tract #1
86.482 Acres± m'd
Part Of:
Parcel #85-10-36-100-001-000-008
Parcel #202R407757
City of Wabash
91.25 Acres± (Wabash Co. OS)

Farmstead Only
No Buildings

US Highway #24
Project #FMAF-146-0(10)



See Page 2 of 5

See Page 1 of 5

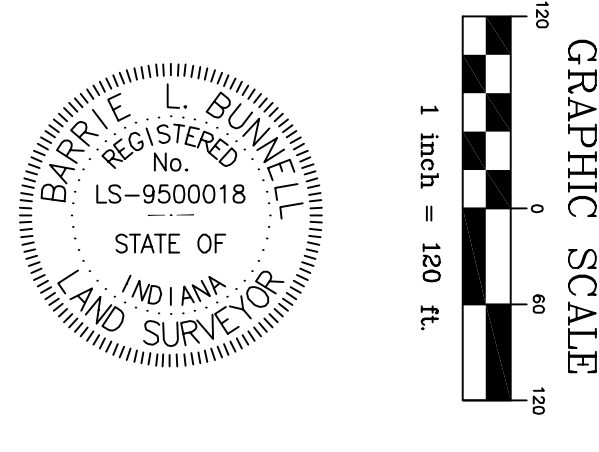
Surveyor's Certificate

I Barrie L. Bunnell, a Professional Land Surveyor of the State of Indiana do hereby certify that the attached plat and above legal description were prepared by me, and to the best of my knowledge and belief was executed in accordance with the requirements of the Indiana Survey Standards as defined in Title 86.5, Article 1, Rule 12 of the Indiana Administrative Code.

To Economic Development Group (EDG) of Wabash County, First American Title Insurance Company, and the City of Wabash:
This is to certify that this map or plat and the survey on which it is based were made in accordance with the 2016 Minimum Standard Detail Requirements for ALTA / NSPS Land Title Surveys jointly established and adopted by ALTA and NSPS, and includes Items 1, 2, 3, 4, 8, 11, 13, 14, 16, 17, 18, and 20 of Table "A" thereof. The fieldwork was completed on August 18, 2016.

Date of Plat or Map: August 24, 2016

CERTIFIED BY: *Barrie L. Bunnell*
Barrie L. Bunnell, P.L.S. #9500018



ADDITIONAL LEGEND:	
TV	Buried Television Lines
BE	Buried Electric
OE	Overhead Electric
WV	Water Valves & Lines
WH	Fire Hydrant
SM	Storm Manhole
SMH	Sanitary Manhole
SS	Sanitary Sewer Cleanout
GS	Gas Lines
UT	Underground Telephone
FM	Fiber Optic Manhole or Marker
WC	8" Wood Corner Post
CM	Concrete R/W Monument
T	Tree
SL	Street Lights
HAP	Handicap Accessible Parking Space
SSL	Sanitary Sewer Line
SSL	Storm Line
PP	POWER POLE
ECB	Electric Control Box

LEGEND:	
SR	SET AS STEEL REBAR/CAP
SR	MAG NAIL SET
SR	RAILROAD SPOKE FOUND
SR	STEEL REBAR FOUND
SR	WOOD CORNER MONUMENT
SR	RAILROAD IRON CORNER POST
SR	SECTION CORNER MONUMENT
SR	WIRE FARM TYPE FENCE
SR	POINT OF BEGINNING
SR	POINT OF COMMENCEMENT
SR	STEEL CORNER POST
SR	NO MONUMENT FOUND
M'D	MEASURED
REC	RECORDED
PL	POWER POLE
CP	CONCRETE CORNER POST
W	WIRE FENCE
WSS	WOOD SIGN SET

FIELD WORK COMPLETION DATE - August 18, 2016
CERTIFICATION DATE - August 24, 2016
PREPARED FOR - Banning Engineering
TITLE HOLDERS - City of Wabash
ADDRESS - Wabash Northeast Business Complex,
State Road #13, Wabash, IN

ALTA / NSPS Land Title Survey
Wabash Northeast Business Complex
Section 1, Section 2, and
86.482 Acres Future Development
Part of the NE 1/4 & NW 1/4 of Section 36, Twp. 28N, R6E
In Noble Township, Wabash County, Indiana

Bunnell Land Surveying & Engineering
JOB#2016-052
DATE: 08/24/2016
Drawn By - BLB
Field By - BLB & DCS
DWC: Wabash Northeast Business Complex ALTA 2016.dwg
File: C:\Land Projects\2Sections\28-6\36\Bus Park ALTA 2016.dwg
10 West Hill Street
WABASH, INDIANA 46992
Ph: (260) 563-9110