

Phase I History/Architecture Survey for the Leesburg Industrial Park, Fairfield Township, Highland County, Ohio

Prepared By:

Kramb Consulting LLC
Amy L. Kramb, Architectural Historian
7511 Riverside Drive
Dublin, Ohio 43016
614.264.7078

Submitted Through:

CTL Engineering of Ohio, Inc.
CTL Project No. 16510122COLb
2860 Fisher Road
Columbus, Ohio 43204
614.276.8123

Submitted To:

Highland County Board of Commissioners
Attention: Nicole Oberrecht
119 Governor Foraker Place, Suite 211
Hillsboro, Ohio 45133-1161
937.393.1911

May 2016

ABSTRACT

The Highland County Board of Commissioners are conducting environmental studies for an 80.346 acre property, known as the Leesburg Industrial Park, located at 11710 State Route (SR) 771 in Leesburg, Ohio. The environmental studies, including this Phase I History/Architecture survey, are necessary to assess the Leesburg Industrial Park property for site certification through JobsOhio's new SiteOhio program.

On April 25, 2016, Kramb Consulting LLC (Kramb) completed a literature review for the area of potential effect (APE). The literature review identified that the APE has no National Register of Historic Places (NRHP) listed properties or districts, no Determination of Eligibility properties, and no National Historic Landmarks. The APE contains one previously documented Ohio Genealogical Society cemetery, two previously documented Ohio Historic Inventory (OHI) sites and three previously recorded Ohio Archaeological Inventory (OAI) sites. The literature reviewed revealed that in 2001, APPLIED Archaeological Services, Inc. conducted a cultural resources survey for the Leesburg Industrial Park site. Upon review of the 2001 report, Ohio's State Historic Preservation Office (SHPO) issued a finding of No Eligible or Listed Properties. However, the 2001 survey only addressed direct impacts on resources identified within the boundaries of the 80-acre site. This Phase I History/Architecture report addresses the indirect, visual effects of the Leesburg Industrial Park on historic resources, if any.

On April 26, 2016, Kramb visited the project location to confirm an APE for indirect impacts and visually inspect parcels within that APE. History/architecture resources identified during the field survey were assigned an architectural location number. Sixteen architectural location numbers were assigned. Of the sixteen locations, only four contained history/architecture resources over fifty years of age. All of the resources over fifty-years of age were assessed for NRHP eligibility.

Of the four properties with resources over fifty years of age, two are considered eligible for the NRHP. The HIG-00223-01 (Fairfield Friends Meeting House) is eligible for the NRHP under Criteria A and C, and the Fairfield Quaker Cemetery (OGS #5194) is eligible for the NRHP under Criterion A. Both HIG-00223-01 and the Fairfield Quaker Cemetery have already lost some integrity of setting. Additional buildings within the Leesburg Industrial Park will likely further erode the integrity of setting for HIG-00223-01 and the Fairfield Quaker Cemetery; however, additional buildings will not harm the remaining aspects of integrity that make the two sites eligible for the NRHP. Because the future industrial buildings with the Leesburg Industrial Park will likely be limited to one or two stories, an earthen mound with vegetative screening along the SR 771 frontage of the Leesburg Industrial Park site will help reduce visual impacts due to further development of the site and minimize effects to HIG-00223-01 and the Fairfield Quaker Cemetery.

TABLE OF CONTENTS

| | |
|---|------------|
| Abstract | i |
| Table of Contents | ii |
| List of Figures | iii |
| List of Photographs | iv |
| 1.0 Introduction | 1 |
| 2.0 Literature Review | 2 |
| 2.1 Literature Review Methodology | 2 |
| 2.2 Previously Documented Resources | 2 |
| 3.0 Historic Context | 4 |
| 4.0 History/Architecture Field Methods | 7 |
| 5.0 Results of History/Architecture Survey | 8 |
| 6.0 Conclusions and Recommendations | 11 |
| 7.0 References | 13 |
| Appendix A: Figures | |
| Appendix B: Photographs | |

LIST OF FIGURES

Figure 1: Portion of the 2015 *Official Transportation Map* showing the approximate project location in Highland County, Ohio

Figure 2: 2015 Google aerial map showing the project location and Area of Potential Effect (APE) in Leesburg, Highland County, Ohio

Figure 3: Portion of the *USGS 7.5-Minute Series (Topographic) Leesburg, Ohio Quadrangle (1960, Photo-revised 1974, Photo-inspected 1979)* showing the project location and APE

Figure 4: Ohio Historic Preservation Office Geographic Information Systems Map showing the project location and previously recorded resources within the APE

Figure 5: Portion of the *USGS 15-Minute Series (Topographic) Sabina Quadrangle (1914)* showing the project location and APE

Figure 6: Portion of the *Atlas of Highland County, Ohio (Lake, 1871)* showing the project location

Figure 7: Portion of the *Atlas of Highland County, Ohio (Lanthrop & Penny, 1887)* showing the project location

Figure 8: Portion of the *New Atlas of Highland County, Ohio (Hunter, 1916)* showing the project location

Figure 9: Portion of the *USGS 7.5-Minute Series (Topographic) Leesburg, Ohio Quadrangle (1960, Photo-revised 1974, Photo-inspected 1979)* identifying the architectural location numbers assigned to history/architecture resources within the APE

Figures 10: 2015 Google aerial map identifying the architectural location numbers assigned to history/architecture resources within the APE

LIST OF PHOTOGRAPHS

Photo 1: View of Leesburg Industrial Park facing north from the west side of SR 771 at Industrial Drive

Photo 2: View of architectural location (AL) 1 facing east from the west side of SR 771 at the entrance of AL 2 (HIG-00223-01) and AL 3 (OGS 5194)

Photo 3: View of SR 771 facing south from the west side of SR 771 at the entrance to AL 2 (HIG-00223-01) and AL 3 (OGS 5194)

Photo 4: East facade of AL 2 (HIG-00223-01)

Photo 5: East and north facades of AL 2 (HIG-00223-01)

Photo 6: West and south facades of AL 2 (HIG-00223-01)

Photo 7: View of AL 3 (OGS 5194) facing southwest from the southwest corner of AL 2 (HIG-00223-01)

Photo 8: View of AL 3 (OGS 5194) facing north from the west side of AL 2 (HIG-00223-01)

Photo 9: View, facing north along the west side of SR 771, of a walled section at the northern edge of AL 3 (OGS 5194)

Photo 10: View of the Leesburg Industrial Park facing south from Lovers Lane

Photo 11: View facing south along SR 771, from north of Lovers Lane and outside the APE, to show that changes in elevation prevent views of the Leesburg Industrial Park

Photo 12: Facing north from Lovers Lane and showing the south and east facades of AL 4

Photo 13: Facing northeast from Lovers Lane and showing the garage associated with AL 4

Photo 14: Facing east along Lovers Lane from SR 771 and showing AL 7 and AL 8

Photo 15: Facing north from Kimberly Street and showing AL 5 and AL 9

Photo 16: Facing north and showing AL 5 and AL 6

Photo 17: View of the Leesburg Industrial Park site facing south from Lovers Lane east of Kimberly Street

Photo 18: Facing north from Lovers Lane, view of house associated with AL 10

Photo 19: Facing north from Lovers Lane, view of outbuildings associated with AL 10

Photo 20: Facing south from Lovers Lane, view of AL 11

Photo 21: Facing south from Lovers Lane, view of AL 12

Photo 22: Facing south from Lovers Lane, view of AL 13

Photo 23: At the eastern edge of the APE, facing southwest from Lovers Lane towards the Leesburg Industrial Park

Photo 24: Facing south and showing AL 15

Photo 25: Facing north from AL 15 on the west side of SR 771

Photo 26: Facing west from SR 771 and showing AL 14 (Source: Google images, 2016)

Photo 27: Facing northeast from SR 771 and showing the house associated with AL 16

Photo 28: Facing northeast from SR 771 and showing AL 16

1.0 INTRODUCTION

The Highland County Commissioners are conducting environmental studies for an 80.346 acre property, known as the Leesburg Industrial Park, located at 11710 State Route (SR) 771 in Leesburg, Ohio (see Appendix A: Figure 1-3). The environmental studies, including this Phase I History/Architecture survey, are necessary to assess the Leesburg Industrial Park property for site certification through JobsOhio's new SiteOhio program.

This History/Architecture Survey complies with Section 106 of the National Historic Preservation Act (16 United States Code 470) and assess the effects of the Leesburg Industrial Park project on any buildings, structures, sites, or objects included in or eligible for the National Register of Historic Places (NRHP) per Section 106 regulations contained in 36 Code of Federal Regulations (CFR) Part 800. Buildings, structures, sites, or objects included in or eligible for the NRHP are called historic resources. Effects on historic resources may be direct or indirect. Direct effects typically impact historic resources identified within the project boundary; whereas, indirect effects generally impact historic resources outside the project boundary. One of the most common indirect effects relates to visual intrusions created by the proposed project.

In 2001, APPLIED Archaeological Services, Inc. conducted a cultural resources survey for the Leesburg Industrial Park site. Upon review of the 2001 report, Ohio's State Historic Preservation Office (SHPO) issued a finding of No Eligible or Listed Properties. However, the 2001 survey only addressed direct impacts on resources identified within the boundaries of the 80-acre site.

This Phase I History/Architecture report addresses the indirect, visual effects of the Leesburg Industrial Park on historic resources. During field investigations, Kramb Consulting LLC (Kramb) defined an Area of Potential Effect (APE) for indirect impacts based on existing views of the Leesburg Industrial Park, topography and distances. Kramb then reviewed all buildings, structures, sites and objects within the APE to identify any resources over fifty years of age and assess those resources for NRHP eligibility. Finally, Kramb determined whether the Leesburg Industrial Park development project would adversely affect any historic properties identified within the APE.

2.0 Literature Review

2.1 LITERATURE REVIEW METHODOLOGY

Before conducting the field investigations for this project, Kramb Consulting LLC (Kramb) completed a literature review to identify previously documented resources within the vicinity of the project.

On April 25, 2016, Kramb reviewed the Ohio Historic Preservation Office (OHPO) Geographic Information Systems (GIS) database for the following resources:

- Ohio Historic Inventory (OHI) properties;
- Ohio Archaeological Inventory (OAI) sites;
- National Register of Historic Places (NRHP) listings;
- National Register Determination of Eligibility (DOE) listings;
- National Historic Landmarks sites;
- Ohio Genealogical Society (OGS) cemeteries; and
- Previously completed cultural resources reports.

Kramb also reviewed the following databases, historical maps, atlases, and histories.

- Buckeye Assets (Ohio Department of Transportation’s online historic and active bridge inventory)
- OGS cemetery database
- *USGS 7.5-Minute Series (Topographic) Leesburg, Ohio Quadrangle (1960, Photo-revised 1974, Photo-inspected 1979)*
- *USGS 15-Minute Series (Topographic) Sabina Quadrangle (1914)*
- *The Atlas of Highland County, Ohio (Lake, 1871)*
- *The Atlas of Highland County, Ohio (Lanthop & Penny, 1887)*
- *The New Atlas of Highland County, Ohio (Hunter, 1916)*

2.2 PREVIOUSLY DOCUMENTED RESOURCES

Within the area of potential effect (APE), there are no NRHP listed properties or districts, no DOE properties, and no National Historic Landmarks (see Appendix A: Figure 4).

The literature review identified the following previously documented OHI and OAI resources within the APE (see Appendix A: Figure 4).

Table 1: OHI and OAI Resources within the APE

| Site # | UTM | Name | Date/Era/Association |
|--------------|---------------------|---------------------------------|----------------------------|
| HI-0277 | 17 281050E 4356770N | Unnamed, archaeological site | Prehistoric, Early Archaic |
| HI-0278 | 17 280450E 4356700N | Unnamed, archaeological site | Prehistoric |
| HI-0279 | 17 280450E 4356580N | Unnamed, archaeological site | Historic, non-aboriginal |
| HIG-00296-01 | 17 280360E 4356580N | Barret Shed | Circa 1900 |
| HIG-00223-01 | 17 280275E 4356609N | Fairfield Friends Meeting House | 1822 |

The literature review also identified the Fairfield Quaker (Old Fairfield) Cemetery (OGS #5194) located on the west side of State Route (SR) 771 adjacent to the above referenced Fairfield Friends Meeting House (HIG-00223-01) and opposite the entrance to the Leesburg Industrial Park.

The literature review identified one previously conducted cultural resources survey within the APE (see Appendix A: Figure 4). In 2001, Applied Archaeological Services, Inc. completed *Phase I Cultural Resources Management Investigations for a Proposed 36.9 ha (91.1 a) Industrial Park in Fairfield Township, Highland County, Ohio* (Weller, 2001). This survey identified sites HI-0277, HI-0278, HI-0279 and HIG-00296-01 within the boundaries of the Leesburg Industrial Park. This survey did not consider indirect effects of the industrial park on historic resources within view of the proposed project.

A review of the *USGS 15-Minute Series (Topographic) Sabina Quadrangle (1914)* and *USGS 7.5-Minute Series (Topographic) Leesburg, Ohio Quadrangle (1960, Photo-revised 1974, Photo-inspected 1979)* indicated that the project is located on the outskirts of Leesburg, a village in rural Highland County, and adjacent to the Fairfield Cemetery. According to these topographic maps, prior to 1974, the project area remained rural with scattered farmsteads. A review of 2015 aerial mapping indicated that modern residential buildings, industrial buildings and educational buildings now exist within the area.

3.0 HISTORIC CONTEXT

To assess the National Register of Historic Places (NRHP) eligibility of resources identified within the area of potential effect (APE), it is necessary to know the events and persons that significantly contributed to the history of the area. The project is located in the Village of Leesburg within Fairfield Township in the northern portion of Highland County. The following historic context provides essential background for evaluating the NRHP eligibility of resources within this project area.

The Establishment of Highland County

An increased number of settlers began entering the Ohio lands after General Wayne signed the Treaty of Greenville in 1795. The treaty outlined terms of peace with the Native Americans residing in the region. Between 1796 and 1801, settlers began surveying and establish small towns throughout the region that would later become Highland County in the State of Ohio. Highland County was officially created by legislation in 1805; the county was named Highland because the area encompassed the highlands between the Scioto and Miami Rivers (Klise, 1902). When originally created, Highland County included all of its current boundaries plus portions of what would later become Fayette and Clinton Counties; at its creation in 1805, Highland County included only the following four townships: New Market, Brush Creek, Liberty, and Fairfield (Klise, 1902).

The First Area Surveyed

In the summer of 1796, General Massie and his son Henry Massie began surveying land in the future Highland County (Klise, 1902). In April of 1798, Henry Massie and a small company of men, including Oliver Ross and Robert Hudson, started laying out a town of 400 acres which they modeled after the city of Philadelphia, Pennsylvania; Massie named the town New Market after his favorite village in his home state of Virginia (Klise, 1902). Several men visited Massie's newly surveyed town in the summer of 1799 resulting in the purchase of land and the construction of the first permanent residences in New Market and Highland County (Klise, 1902). William Wishart is credited with erecting the first cabin on a lot in New Market; and, Jonathan Berryman purchased 100 acres adjacent to the south side of New Market, constructed a cabin, and planted the first orchard in Highland County (Klise, 1902). Other permanent settlers to the New Market area around the year 1800 included St. Clair Ross, Jacob Bean, Robert Boyce, Eli Collins, Isaac Dillon, Jacob Eversole, Christian Bloom, and John Emrie (Klise, 1902).

Forming of the County Seat

Being the oldest town in the region, New Market was the social and political center of Highland County prior to 1807; however, with the official establishment of Highland County in 1805 came a commission to establish a county seat (Klise, 1902). The commission sought to locate the county seat in the geographical center of Highland County; so, in August of 1807, David Hays, the director of the commission, laid out a new 200 acre town on land purchased from Benjamin Elliot (Klise, 1902). The commission named the new settlement Hillsboro (Klise, 1902). By 1808, foundations were laid in Hillsboro for the county courthouse and county jail, and Hillsboro was on its way to becoming the largest town in Highland County (Klise, 1902).

The Village of Leesburg

In the spring of 1799, Nathaniel Pope, from Virginia, made his way to Highland County, purchased land from General Massie and established a homestead along a creek in an area that what would become known as Leesburg (Klise, 1902). In 1800, John Walters established a farm on the opposite side of the creek from Nathaniel Pope, and James Howard built a cabin on the hill near Pope and Walters (Klise, 1902). Howard erected a corn mill on a waterway later named Lees Creek; and, Pope and Walters cut a road into the area allowing their friends easier travel when moving to Leesburg (Scott, 1890). In 1803, William Lupton moved from Virginia and purchased Nathaniel Pope's land in Leesburg (Scott, 1890). By 1805, William Lupton had erected a saw mill on Lees Creek.

The Village of Leesburg was officially organized in 1814 on land owned by James Johnson (Klise, 1902). Leesburg is considered the oldest town in Fairfield Township (Seel, 1945). Beginning in 1814, Mr. Joseph Bentley kept the first tavern in his hotel (Seel, 1945). In 1816, Samuel Sanders was commissioned as post master and Dr. Havilah Beardsey opened a physician's office (Seel, 1945). Leesburg was known for its mills including a carding mill built by David Swain on Lees Creek in 1822, a steam flouring mill built by John C. Batton near the railroad station in 1832, and a roll-carding and fulling factory begun by William M. Hardy in 1832 (Seel, 1945).

According to one source, "practically all of the early settlers around the village of Leesburg were Quakers" (Seel, 1945). The first Quaker meeting house in Highland County was a log structure erected in 1803-1804 near Leesburg on the grounds now occupied by the brick Fairfield Meeting House which was constructed in 1822 (Scott, 1890). Universalism become popular in Leesburg around 1835, the Baptists organized a church in 1841, the Methodists established a church in 1852, and the Seventh-Day Adventists organized a church in 1879 (Seel, 1945).

The Society of Friends Meeting House

The Society of Friends, also known as Quakers, began settling in eastern and southern Ohio in the late-1700s and early 1800s (Ohio History Connection, 2015). In 1796, George Harlan and his family became the first known Quakers to settle in Ohio; they selected a site along the little Miami River in present day Warren County near Waynesville (Lindley, 1998) Between 1804 and 1807, the Society of Friends continued settling throughout Highland, Clinton, Greene, Montgomery and Preble Counties bringing the Miami Monthly Meeting House membership to 1,697 persons (Lindley, 1998). The Quakers, who opposed violence and war, became actively involved with 19th century reform efforts including temperance, women's rights, and abolition (Ohio History Connection, 2015).

The Fairfield Friends Meeting House was founded by Barshaba Lupton in 1803 (Scott, 1890). The first minister was Jacob Jackson; he was succeeded by Mildred Ratcliffe a well-known Quaker who left for Pennsylvania in 1816 and then travelled throughout the United States preaching for the Quakers (Klise, 1902). Other early preachers at the Fairfield Friends Meeting House included Elger Brown, Haziah Green, Louise Ladd, William Thornburg, and Joel Wright (Seel, 1945). In its early years, the Fairfield Meeting House had 1,000 members until additional meeting houses were established at Harden's Creek, Lee's Creek, Oak Grove and Lexington (Klise, 1902).

In 1822, the original log meeting house building was replaced by the existing brick meeting house (Scott, 1890). The now vacant Fairfield Friends Meeting House, also known as the Old Fairfield

Meeting House, was the first Quaker Meeting House established in Highland County and it is reportedly the oldest existing church building in Highland County (Wallis, 2016).

Fairfield Quaker Cemetery

Associated with the Fairfield Friends Meeting House in Leesburg is the Fairfield Quaker Cemetery (Ohio Genealogical Society #5194). The cemetery is located to the north, east and west of the meeting house. The first burial at the cemetery was reportedly that of Mrs. Ballard in 1804 (Scott, 1890). Records indicate that the cemetery contains 610 known burials spanning over 100 years and including many of the early permanent settlers of Leesburg and Fairfield Township (Find A Grave, 2016). The cemetery is no longer active. It appears the last few burials occurred in the late 1920s to early 1930s (Find A Grave, 2016).

A Review of Historical Atlases and Maps

In 1871, the land, upon which the Leesburg Industrial Park sits, was owned by L.C. Guthrie; the then 158-acre parcel contained a residence located near current day SR 771 (See Appendix A: Figure 6). The 1871 map confirms the presence of the Friends Meeting House and Cemetery located immediately west of the Leesburg Industrial Park site.

In 1887, the land, upon which the Leesburg Industrial Park sits, was owned by Jonathan Guthrie; the then 100-acre parcel still contained a residence located near current day SR 771 (See Appendix A: Figure 7). The Friends Meeting House is again noted on the 1887 mapping.

In 1916, the land, upon which the Leesburg Industrial Park sits, was owned by John H. Guthrie; the mapping does not identify any residential buildings (See Appendix A: Figure 8). The Friends Meeting House, however, is identified on the 1916 mapping.

The 1914 topographic quadrangle identifies a building on the Leesburg Industrial Park site along SR 771, and it identifies the Friends Meeting House building and cemetery immediately west of the Leesburg Industrial Park site (See Appendix A, Figure 5). The 1914 topographic quadrangle also identifies one building south of the Leesburg Industrial Park site on the east side of SR 771, two buildings north of the Leesburg Industrial Park site on the east side of SR 771 north of Lovers Lane, and one building on the north side of Lovers Lane (See Appendix A, Figure 5). All of the above referenced buildings also appear on the 1960 topographic map; and, the 1960 topographic map identifies one additional building located at the intersection of SR 771, Eastern Avenue (also identified as Standpipe Road) and Lovers Lane (see Appendix A, Figure 3).

4.0 HISTORY/ARCHITECTURE FIELD METHODS

On April 26, 2016, Kramb Consulting LLC (Kramb) visited the project location and conducted field investigations employing methods prescribed in the *Secretary of Interior's Standards and Guidelines for Archeology and Historic Preservation* (National Park Service, 1983).

Kramb visually inspected and photographed the project location and parcels potentially impacted by the proposed project within the area of potential effect (APE). Photographs of the APE are included in Appendix B. Kramb defined the APE while in the field by viewing the project location from numerous vantage points and considering existing visual barriers such as mature trees and buildings. Terrain and distance also factored into defining the APE. The APE is large enough to include buildings with generally unobstructed views of the site. For this project, the APE is roughly a three hundred foot buffer around the entire Leesburg Industrial Park site; however, the buffer is extended to approximately 2000 feet along the site's southern boundary because the flat terrain, lack of intervening buildings, and lack of mature trees provides views of the Leesburg Industrial Park site from a greater distance.

History/architecture resources identified within the defined APE were assigned an architectural location number. Sixteen architectural location numbers were assigned (see Appendix A: Figures 9-10). Photographs of each architectural location are included in Appendix B. Of the sixteen locations, only four contained history/architecture resources over fifty years of age (see Section 5.0). All of these resources over fifty-years of age were assessed for National Register of Historic Places (NRHP) eligibility (see Section 6.0).

5.0 RESULTS OF HISTORY/ARCHITECTURE SURVEY

The Leesburg Industrial Park site is located among agricultural fields on the south side of Leesburg. Over the last 15 years, development has encroached on the rural area. A private roadway called Industrial Drive has already been constructed into the Leesburg Industrial Park site from State Route (SR) 771; and, three warehouse type buildings already exist along the south side of Industrial Drive. According to the Highland County Auditor, the roadway and buildings within the Leesburg Industrial Park were constructed in 2001. Just south of the Leesburg Industrial Park on the west side of SR 771 are the Fairfield Local School District's offices and Fairfield Local High School which were constructed in 2004. On the ridge north of the Leesburg Industrial Park off Lovers Lane is the Kimberly Street residential subdivision constructed between 2000 and 2005. A cellular communications tower is located east of the Leesburg Industrial Park off County Road (CR) 324, and the Leesburg water tower sits atop the hillside to the north of Leesburg Industrial Park. According to a review of historical aerial photographs, the water tower was constructed sometime between 1995 and 2003. A 3-unit apartment complex, constructed in 2007, is located adjacent to the Leesburg water tower.

All history/architecture resources identified within the defined APE were assigned an architectural location number. Sixteen architectural location numbers were assigned (see Appendix A: Figures 9-10). Table 2, below, summarizes each of the sixteen locations. Photographs of the project setting and the buildings within the APE are included in Appendix B.

Table 2: History/Architecture Locations within the APE

| # | Address/Location | Date of Construction* | Description |
|----|--|-----------------------|---|
| 1 | 1000 Industrial Dr. | 2001 | Living Produce of Southern Ohio warehouses |
| 2 | West side of SR 771 across from Industrial Dr. | 1822* | HIG-00223-01; Fairfield Friends Meeting House (Leesburg Friends Church) |
| 3 | West side of SR 771 across from Industrial Dr. | 1804-1930s* | OGS # 5194; Fairfield Quaker Cemetery |
| 4 | 9309 Lovers Ln. | 1945 | Vernacular style single-family residence and one-car garage |
| 5 | Eastern Ave. just north of 318 Eastern Ave. | Circa 1995-2003* | Village of Leesburg water tower |
| 6 | 318 Eastern Ave. | 2007 | Apartments |
| 7 | 501 Kimberly St. | 1988 | Single-family residence |
| 8 | 502 Kimberly St. | 2007 | Single-family residence |
| 9 | Kimberly St. neighborhood | Circa 2000-2005 | Single-family residences |
| 10 | 9445 Lovers Ln. | 1994 | The original farmhouse has been demolished and replaced with a mobile home. There are several outbuildings on the property that were constructed between 1950 and 1996. |
| 11 | 9520 Lovers Ln. | 1977 | Single-family residence, outbuildings were constructed between 1990 and 1996. |
| 12 | 9536 Lovers Ln. | 1985 | Single-family residence and outbuildings |
| 13 | 9608 Lovers Ln. | 1977 | Single-family residence, outbuildings were constructed between 1990 and 2007 |

| # | Address/Location | Date of Construction* | Description |
|----|---|-----------------------|---|
| 14 | 11713 SR 771 | 1989, 1991 | Two mobile homes |
| 15 | 11611 SR 771 | 2004 | Fairfield Local School District Offices and High School |
| 16 | East side of SR 771 across from Fairfield High School | 1960 | The original farmhouse has been demolished and replaced with a house constructed in 1960. Outbuildings on the property range in age from 1870, as part of the original farmstead, to the 2000s. |

* All construction dates are from the Highland County Auditor: <http://www.highlandcountyauditor.org/Search.aspx> with the exception of the Fairfield Friends Meeting House and Cemetery dates which are derived from posted signs on the site and confirmed by research; and, the construction date of the water tower which was derived from a review of historical aerial photographs.

Of the sixteen history/architecture locations identified within the APE, only four contained resources over fifty years of age. Below are more detailed descriptions of those resources built prior to 1966.

Architectural Location 2 is the Fairfield Friends Meeting House previously recorded as HIG-00223-01 (see Appendix B, Photos 4-6). The site is identified by the Highland County Auditor as the Leesburg Friends Church, and the site has also been identified as the Old Fairfield Meeting House. The one-story, brick building has a simple design and lacks ornamentation. The building is in good condition and has undergone renovations; however, research for this Phase I report did not uncover specific details about the renovation. The rectangular shaped building retains its original stone foundation and brick walls. The building appears to be one room accessed from a center door on the building's east façade. The building has two-over-two windows which appear to be the original windows restored. The front, gabled roof is clad in replacement wood shingles, and vertical wood siding has been installed on the exterior of the west gabled end. There is evidence that additional window and door openings were added to the building overtime; however, those openings have been permanently closed with brick to restore the building's original fenestration pattern. The wood paneled front door appears to be the original door restored. The building retains its original stone front steps beneath the wooden handicap entrance ramp. The rear door opening is currently covered in plywood. There is an exterior cellar entrance located at the southwest corner of the building.

Architectural Location 3 is the Fairfield Quaker Cemetery (see Appendix B, Photos 7-9). The cemetery is also identified as the Old Fairfield Cemetery. It is included in the Ohio Genealogical Society (OGS) database as site #5194. The cemetery is mowed and well-maintained. The stone grave markers are in good condition, especially considering most of the markers were install during the 1800s. Records indicate that the cemetery contains about 600 burials and most graves retain their original markers. At the northern end of the cemetery, along SR 771, is a singular row of burials contained within a raised bed enclosed by a stone fence. Three stone steps centered on the eastern wall lead up into this burial area.

Architectural Location 4 is a house and associated garage, both constructed in 1945, located at 9309 Lovers Lane (see Appendix B, Photos 12-13). The one-story, vernacular style house is in fair condition. Numerous additions obscure the house's original plan. The house has a concrete

foundation, asphalt shingle roofing, aluminum siding, and one-over-one aluminum windows. The vernacular style, one-car garage is also in fair condition. The garage has a concrete block foundation, asphalt shingle roofing, horizontal wood novelty siding, a metal overhead garage door, and a one-over-one window.

Architectural Location 16 is a house, barn and outbuildings located on the east side of SR 771 south of the Leesburg Industrial Park (see Appendix B, Photo 27-28). The one-story, vernacular style house is in good condition. The house has a concrete foundation, one-over-one windows, vinyl siding, and a side gabled roof clad in standing seam metal. Immediately behind the house is a one-story, rectangular shaped, brick building. The brick building's gabled roof is clad in standing seam metal and the building appears to have a stone foundation. Additional details of the brick building are unknown because views of the building are limited from the public right-of-way. Also located on the property is a gambrel roof barn. The barn has standing seam metal roofing and the exterior has been clad in various materials including wood and metal siding. Several large additions wrap around three sides of the barn.

6.0 CONCLUSIONS AND RECOMMENDATIONS

Evaluation Criteria

The National Register of Historic Places (NRHP) Criteria for Evaluation states:

“The quality of significance in American history, architecture, archaeology, engineering, and culture is present in districts, sites, buildings, structures, and objects that possess integrity of location, design, setting, materials, workmanship, feeling, association and;

- A. That are associated with events that have made a significant contribution to the broad patterns of our history; or
- B. That are associated with the lives of persons significant in our past; or
- C. That embody the distinctive characteristics of a type, period, or method of construction, or that represent the work of a master, or that possess high artistic values, or that represent a significant and distinguishable entity whose components may lack individual distinction; or
- D. That yielded or may be likely to yield, information important in prehistory or history.”

Ordinarily, cemeteries and buildings owned by or used for religious purposes shall not be considered eligible for the NRHP unless the property derives its primary importance from architecture or historic importance beyond the merits of a religious doctrine (National Park Service, 1990).

NRHP Eligibility Discussion

Kramb Consulting LLC applied the NRHP criteria to the above ground history/architecture resources over fifty years of age identified within the area of potential effect (APE). The NRHP eligibility of each resource is discussed below.

Architectural Location 2 is the Fairfield Friends Meeting House previously recorded as HIG-00223-01. Constructed on this site in 1822, HIG-00223-01 is the first known Quaker church in Highland County and reportedly the oldest surviving church of any denomination in Highland County. Although HIG-00223-01 is no longer an active Quaker church, the building has not been altered and repurposed for other uses. The building and associated cemetery grounds have been maintained and restored such that it preserves the property’s original feeling. The setting outside the property boundaries has been altered over recent years to include warehouse buildings to the immediate east on the Leesburg Industrial Park site, the Fairfield High School and district offices to the south along SR 771, a cellular tower to the west, and a housing development to the north along Lovers Lane.

Despite impacts to setting, HIG-00223-01 retains integrity of materials, design, workmanship, location, feeling and association. HIG-00223-01 is eligible for the NRHP under Criteria C and A as a significant example of the plain, simple architecture associated with the Quaker culture and for its association with the settlement of Fairfield Township and Highland County in the early 1800s. Although HIG-00223-01 is associated with the Quaker religion, the building is significant

architecturally and in the broader context of Quaker culture, migration and settlement of Fairfield Township and Highland County.

Architectural Location 3 is the Fairfield Quaker Cemetery (OGS #5194). With the first burial occurring in 1804, this cemetery is the one of the oldest known Quaker cemeteries in Highland County. Although no longer an active cemetery, the grounds are maintained and the gravestones are well preserved. The Fairfield Friends Meeting House (HIG-00223-01) centered within the cemetery is also well maintained and restored such that it preserves the cemetery's original feeling and association. The setting outside the cemetery boundaries has been altered over recent years to include warehouse buildings to the immediate east within the Leesburg Industrial Park, the Fairfield High School and district offices to the south along SR 771, a cellular tower to the west, and a housing development to the north along Lovers Lane.

Despite impacts to setting, the cemetery retains integrity of materials, design, workmanship, location, feeling and association. The cemetery is eligible for the NRHP under Criterion A for its significant association with the Quaker culture and early settlement of Fairfield Township and Highland County.

Architectural Location 4 is a house and garage, both constructed in 1945, located at 9309 Lovers Lane. The house has lost integrity of design due to numerous additions. The buildings are not significant representations of architecture warranting NRHP nomination under Criterion C and the property is not associated with significant events, themes or persons warranting NRHP nomination under Criterion A or Criterion B.

Architectural Location 16 is a house and outbuildings located on the east side of SR 771 south of the Leesburg Industrial Park. The outbuildings have lost integrity of design, materials, and workmanship due to additions and alterations. The buildings are not significant representations of architecture warranting NRHP nomination under Criterion C and the property is not associated with significant events, themes or persons warranting NRHP nomination under Criterion A or Criterion B.

Conclusion and Recommendation

In conclusion, the HIG-00223-01 (Fairfield Friends Meeting House) is eligible for the NRHP under Criteria A and C, and the Fairfield Quaker Cemetery (OGS #5194) is eligible for the NRHP under Criterion A. Both HIG-00223-01 and the Fairfield Quaker Cemetery have already lost some integrity of setting. Additional buildings within the Leesburg Industrial Park will likely further erode the integrity of setting for HIG-00223-01 and the Fairfield Quaker Cemetery; however, additional buildings will not harm the remaining aspects of integrity that make the two sites eligible for the NRHP. Because the future industrial buildings with the Leesburg Industrial Park will likely be limited to one or two stories, an earthen mound with vegetative screening along the SR 771 frontage of the Leesburg Industrial Park site will help reduce visual impacts due to further development of the site and minimize effects to HIG-00223-01 and the Fairfield Quaker Cemetery.

7.0 REFERENCES

- Find A Grave. (2016). *Fairfield Quaker Cemetery*. Retrieved May 13, 2016, from Find A Grave: <http://www.findagrave.com/cgi-bin/fg.cgi?page=cr&CRid=40777>
- Hunter, H. (1916). *New Atlas of Highland County, Ohio*. Hillsboro: H.W. Hunter.
- Klise, R. J. (1902). *The County of Highland*. (A. Hough, Ed.) Madison: Northwestern Historical Association.
- Lake, D. (1871). *Atlas of Highland County, Ohio*. Philadelphia: C.O. Titus.
- Lanthop, J., & Penny, H. (1887). *Atlas of Highland County, Ohio*. Philadelphia: H.C. Mead & Co. .
- Lindley, H. (1998). *The Quaker Settlement of Ohio*. Retrieved May 12, 2016, from Dr. Williams' Cyber Niche: <http://drwilliams.org/iDoc/index.htm?url=http://drwilliams.org/iDoc/quakersettlement.htm>
- National Park Service. (1983, September 29). *Archeology and Historic Preservation*. Retrieved January 15, 2011, from National Park Service: http://www.nps.gov/history/local-law/Arch_Standards.htm
- National Park Service. (1990). *How to Apply the National Register Criteria for Evaluation*. Washington D.C.: National Park Service, Department of the Interior.
- Ohio History Connection. (2015, November 5). *Quakers*. Retrieved May 12, 2016, from Ohio History Central: <http://www.ohiohistorycentral.org/index.php?title=Quakers&oldid=36029>
- Scott, D. (1890). *The Early Settlement of Highland County, Ohio*. Hillsboro: The Hillsborough Gazette.
- Seel, J. L. (1945). *History of Leesburg*. Retrieved May 13, 2016, from Leesburg Ohio: <http://www.leesburgohio.org/HistoryofLeesburg.pdf>
- Wallis, J. (2016). *County's First Quaker Church Still Standing, Now Oldest*. Retrieved May 13, 2016, from The Dickey Group: <http://www.thedickeygroup.com/pdf/History.pdf>
- Weller, R. (2001). *Phase I Cultural Resources Management Investigations for a Proposed 36.9 ha (91.1 a) Industrial Park in Fairfield Township, Highland County, Ohio*. Columbus: APPLIED Archaeological Services, Inc.

APPENDIX A: Figures

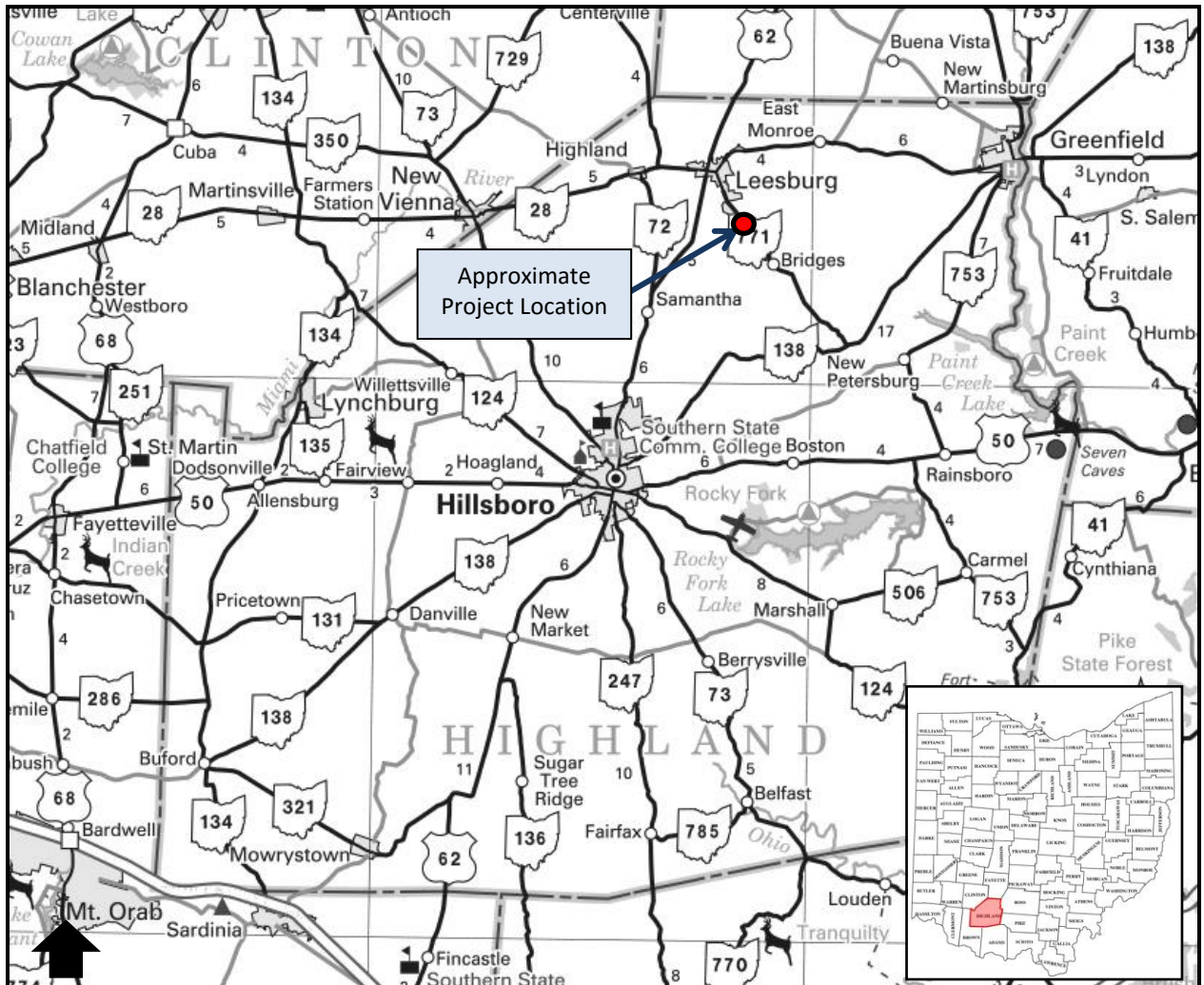


Figure 1: Portion of the 2015 Ohio Department of Transportation's *Official Transportation Map* showing the approximate project location in Highland County, Ohio



Figure 2: 2015 Google aerial map showing the project location and Area of Potential Effect (APE) in Leesburg, Highland County, Ohio

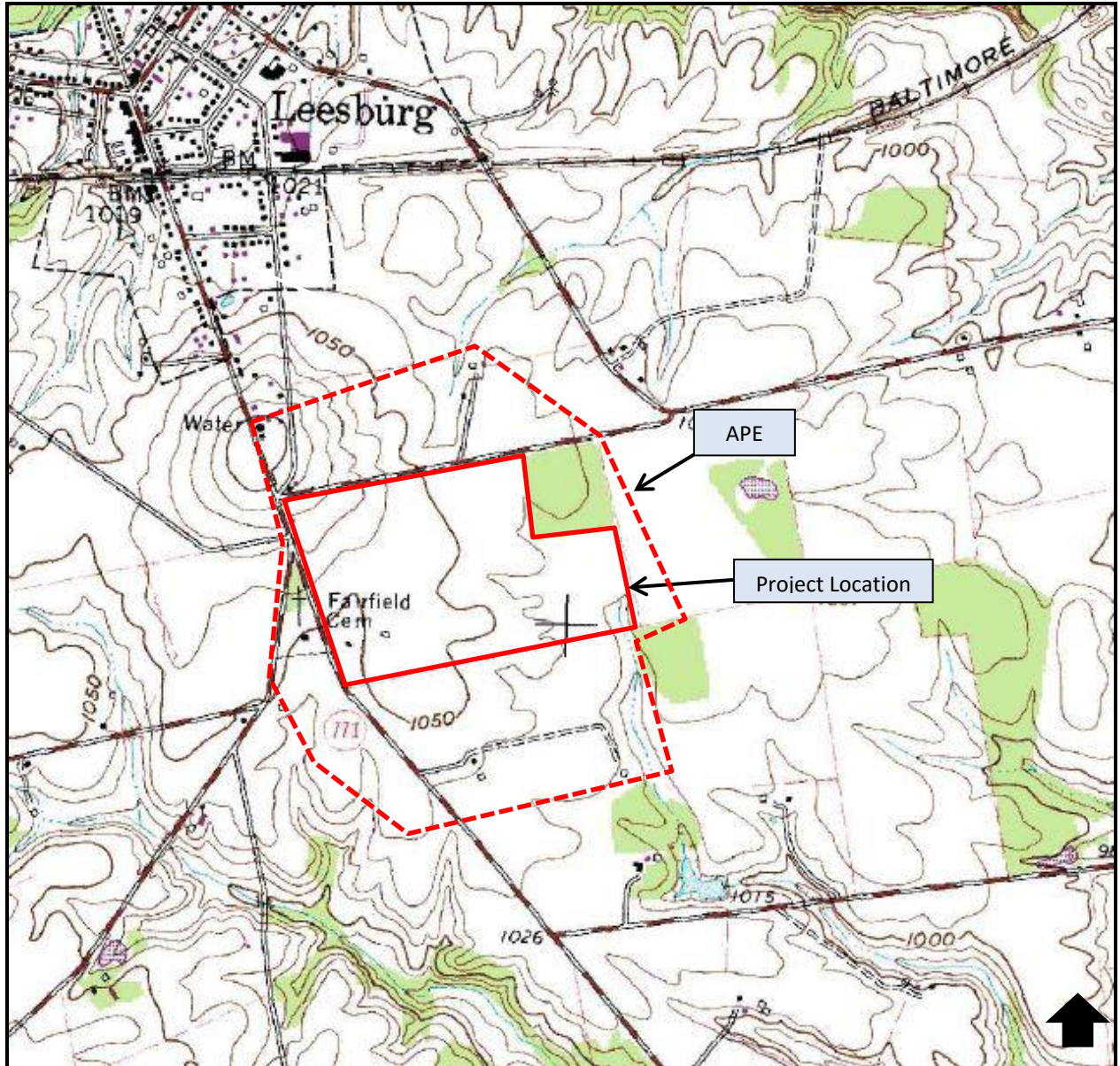


Figure 3: Portion of the USGS 7.5-Minute Series (Topographic) Leesburg, Ohio Quadrangle (1960, Photo-revised 1974, Photo-inspected 1979) showing the project location and APE

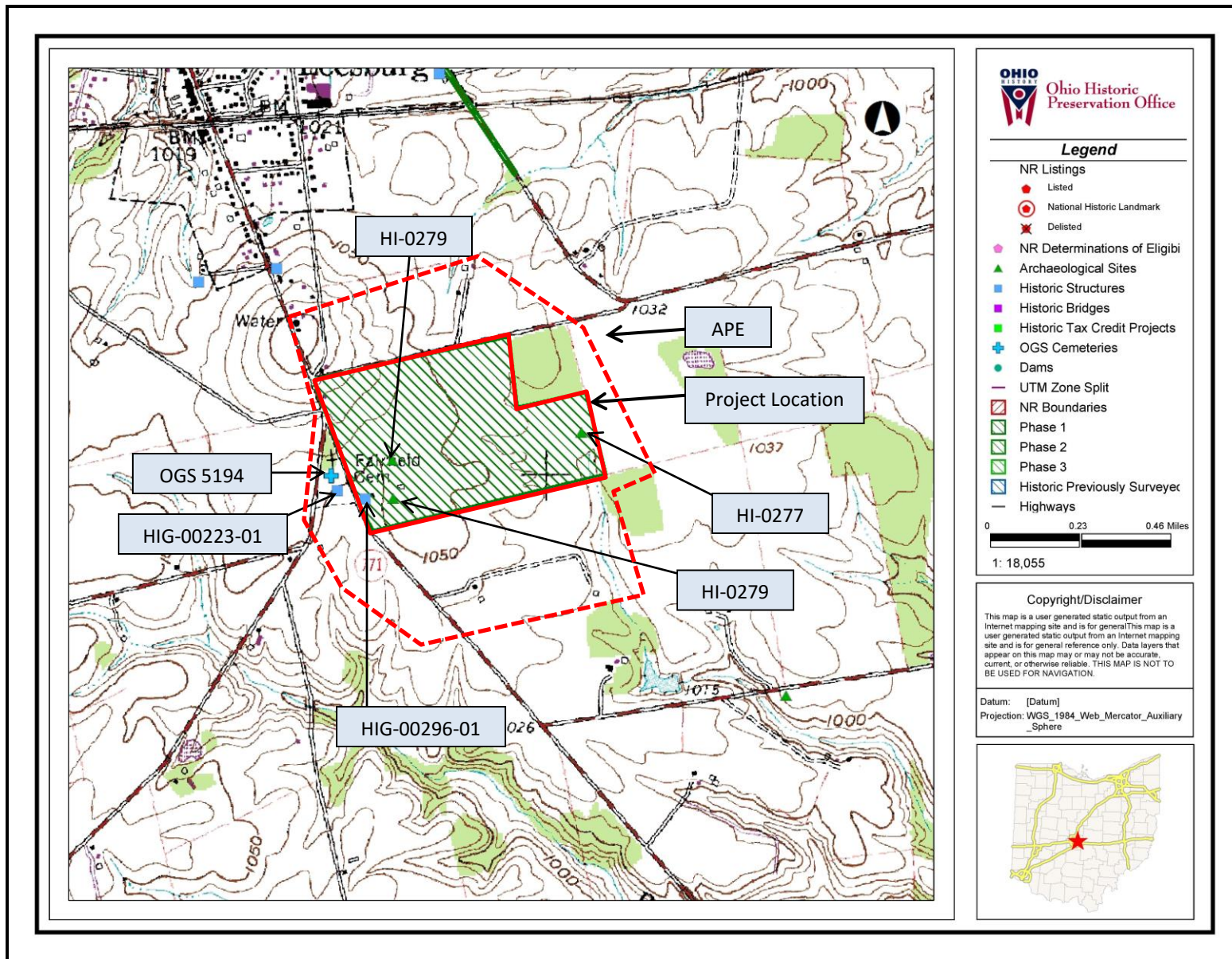


Figure 4: Ohio Historic Preservation Office Geographic Information Systems Map showing the project location and previously recorded resources within the APE

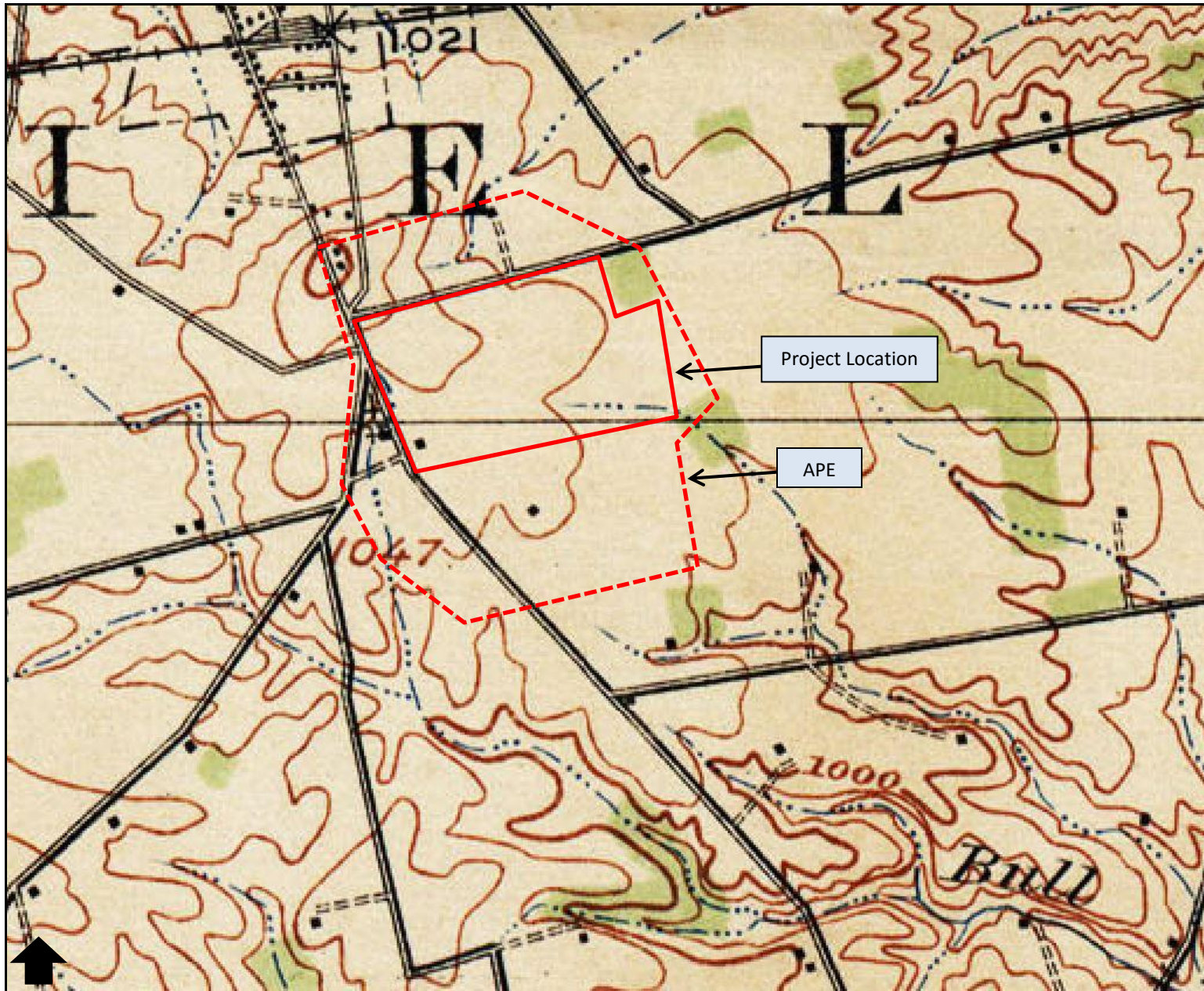


Figure 5: Portion of the USGS 15-Minute Series (Topographic) Sabina Quadrangle (1914) showing the project location and APE

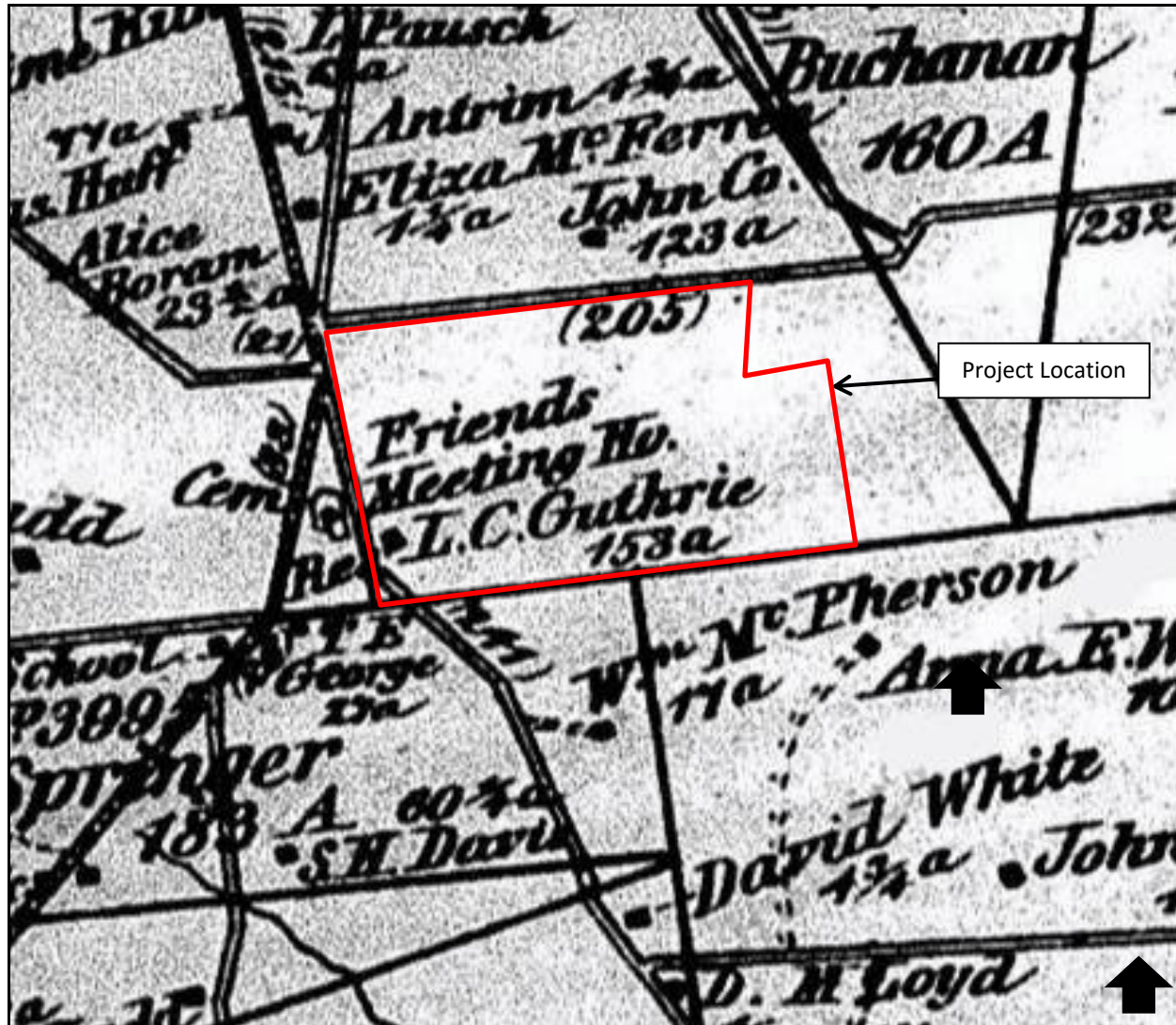


Figure 6: Portion of the Atlas of Highland County, Ohio (Lake, 1871) showing the project location

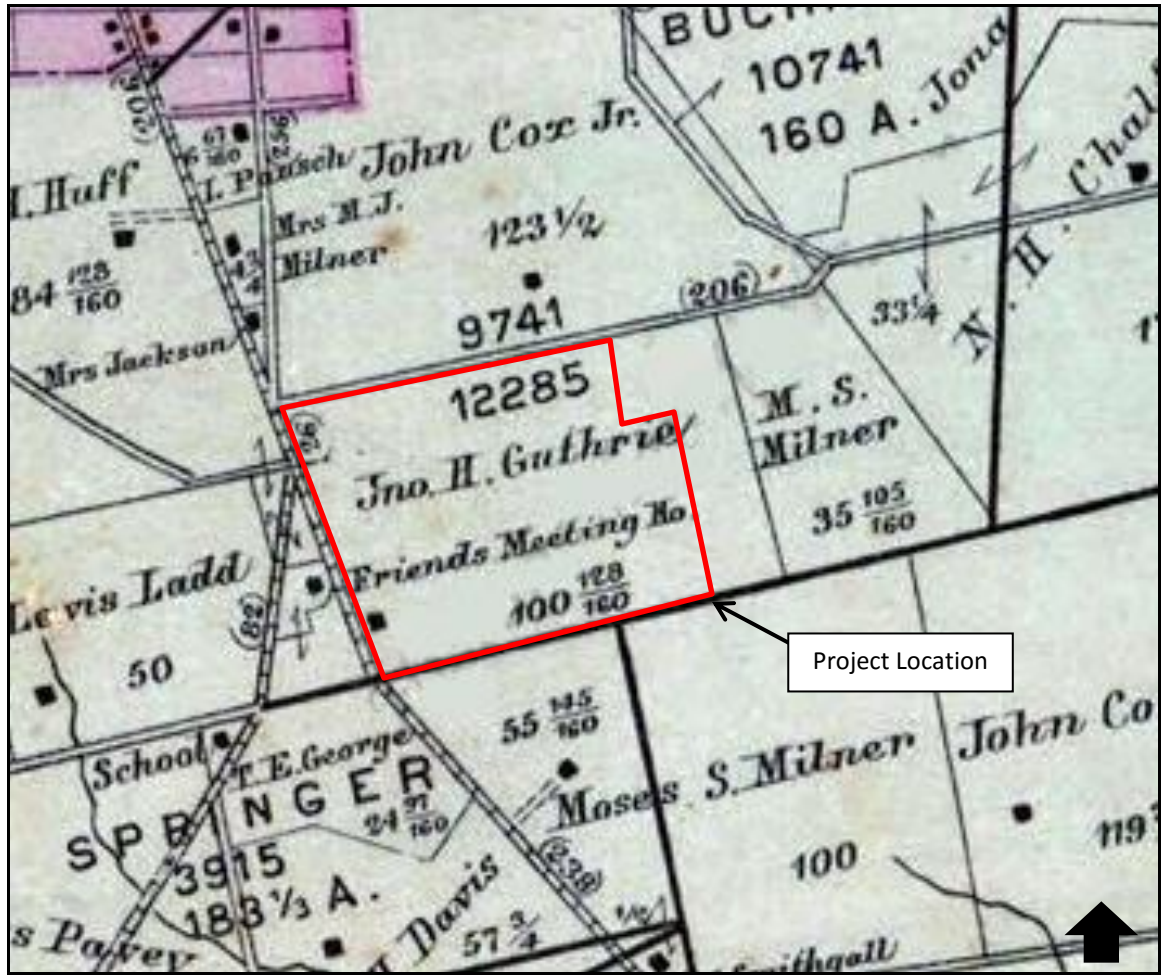


Figure 7: Portion of the *Atlas of Highland County, Ohio* (Lanthop & Penny, 1887) showing the project location

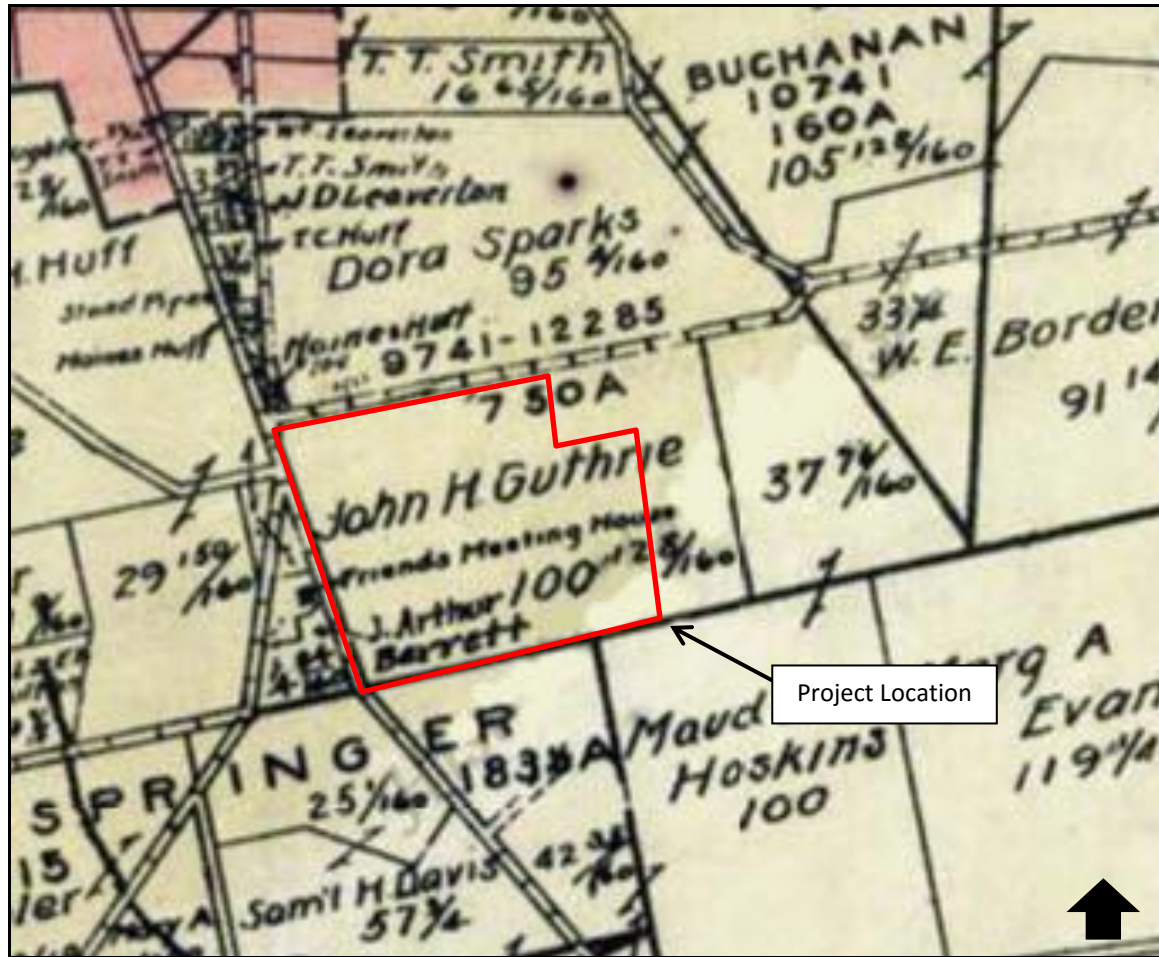


Figure 8: Portion of the *New Atlas of Highland County, Ohio* (Hunter, 1916) showing the project location

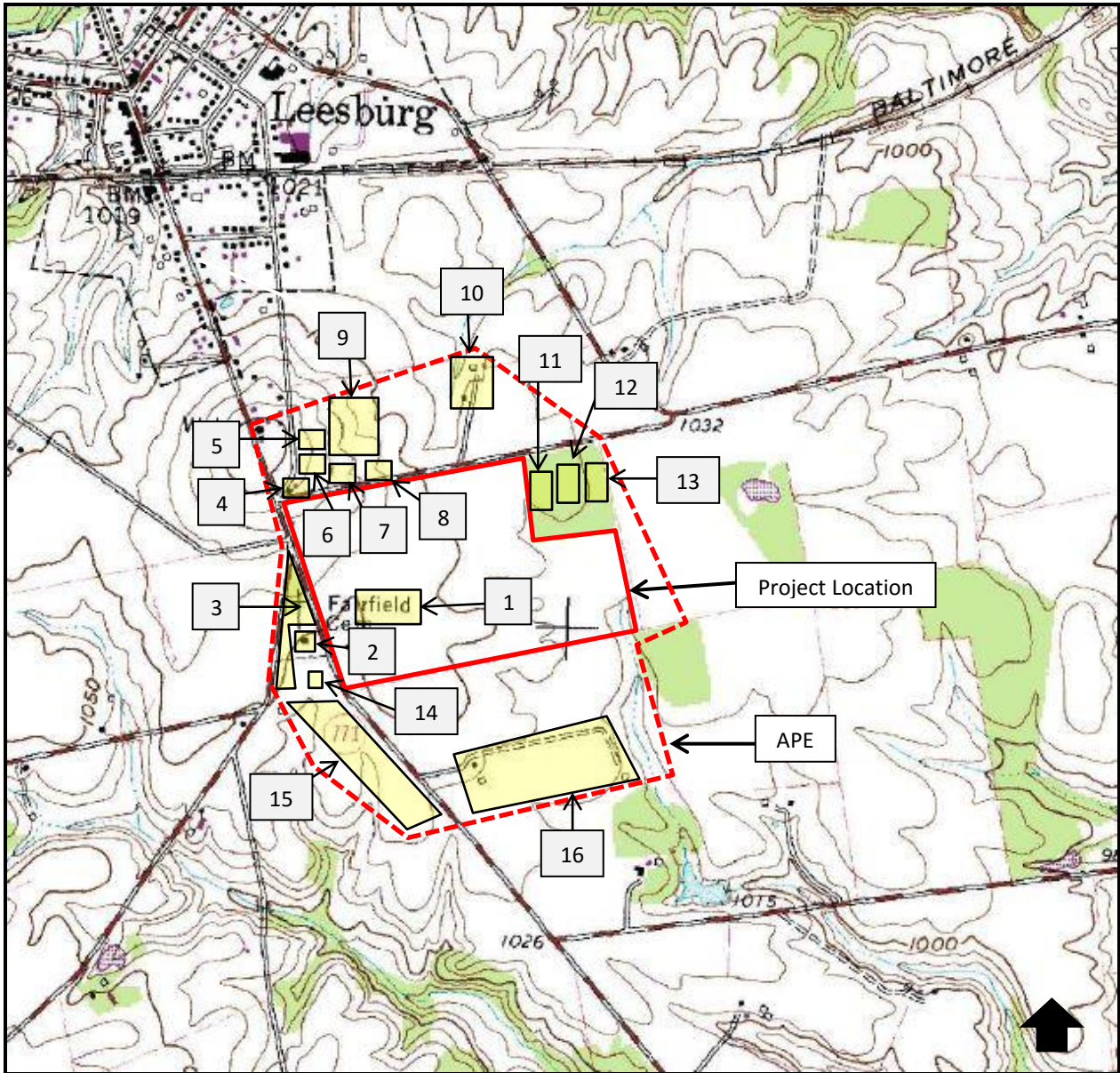


Figure 9: Portion of the USGS 7.5-Minute Series (Topographic) Leesburg, Ohio Quadrangle (1960, Photo-revised 1974, Photo-inspected 1979) identifying the architectural location numbers assigned to history/architecture resources within the APE

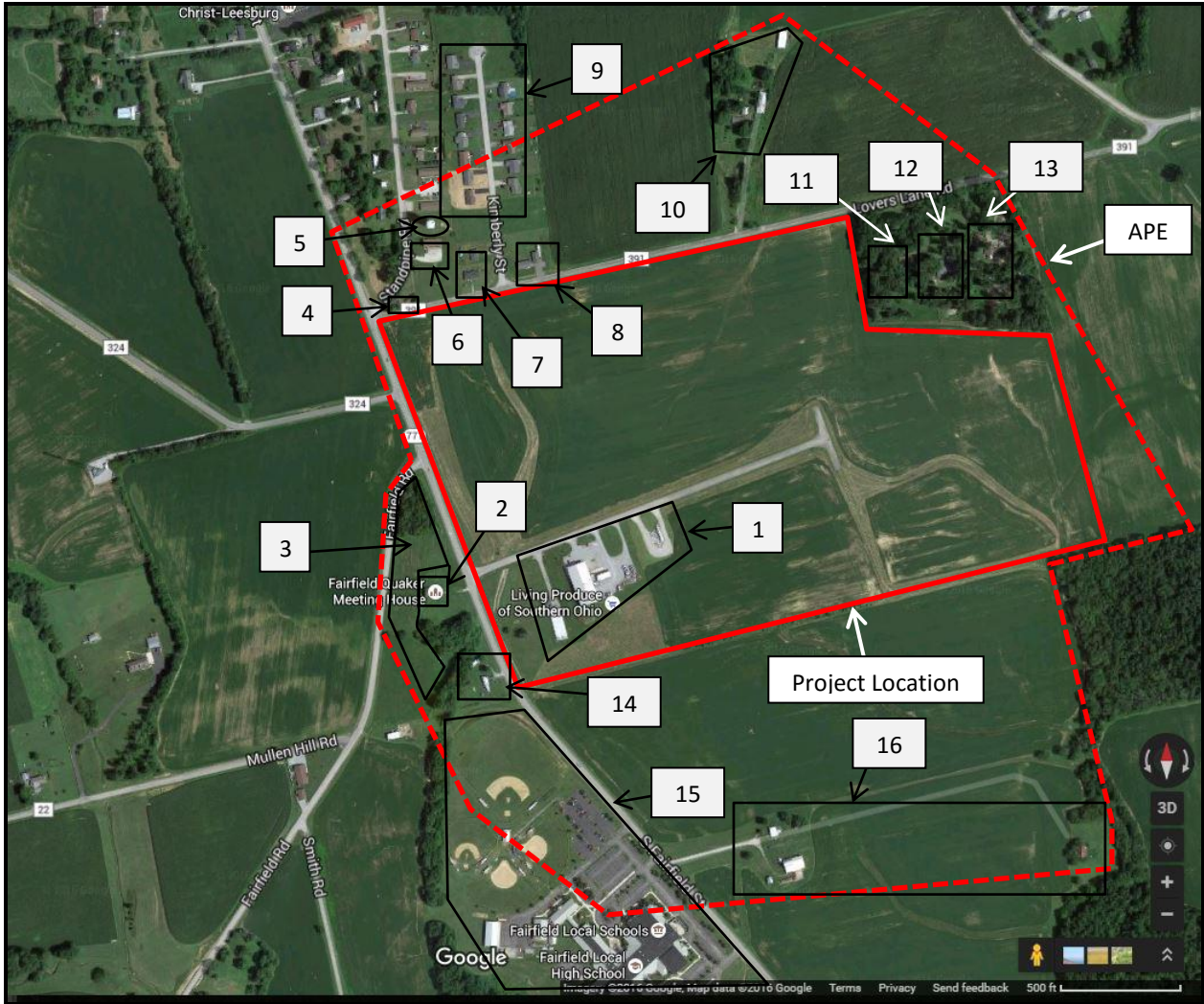
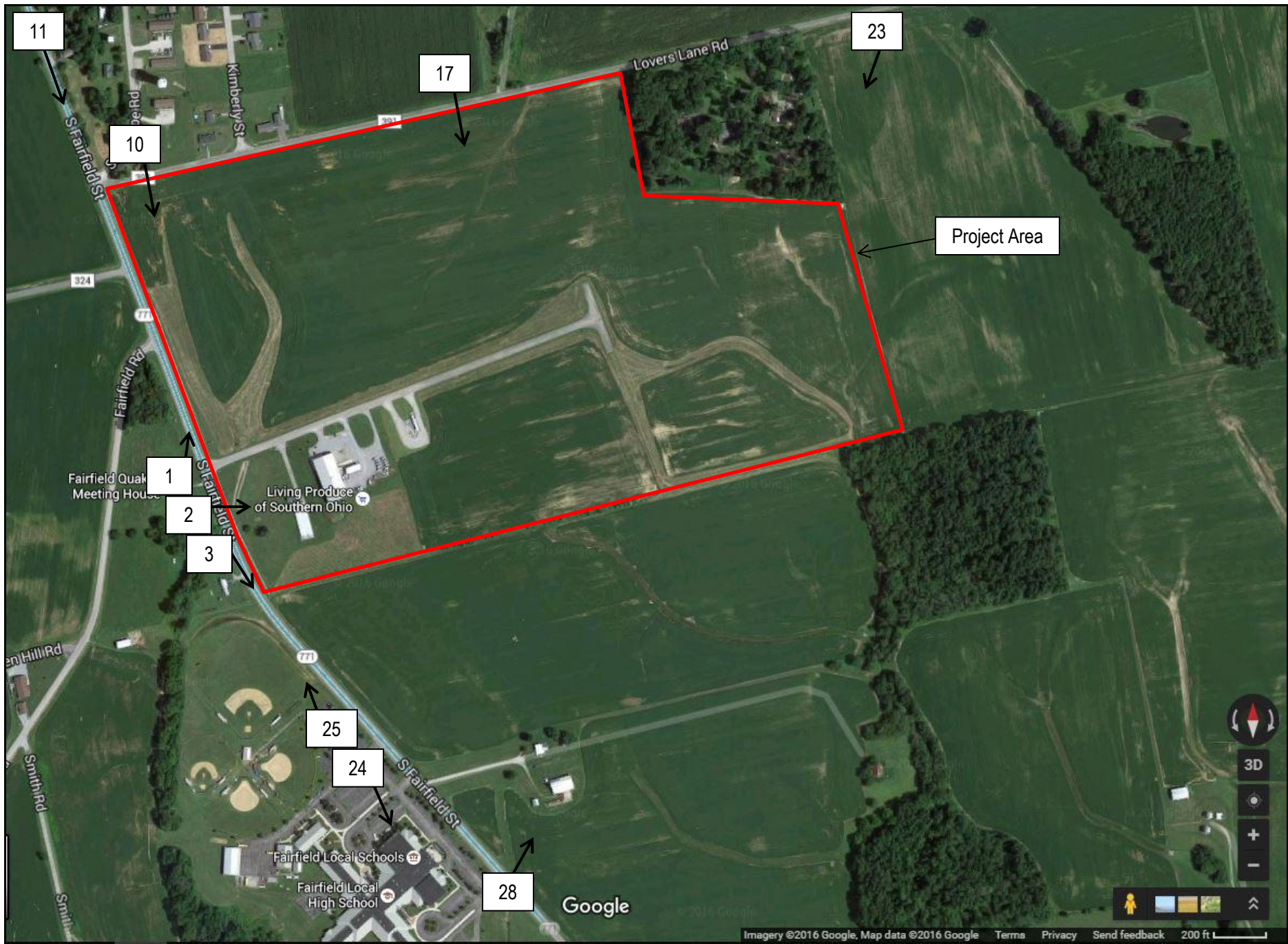
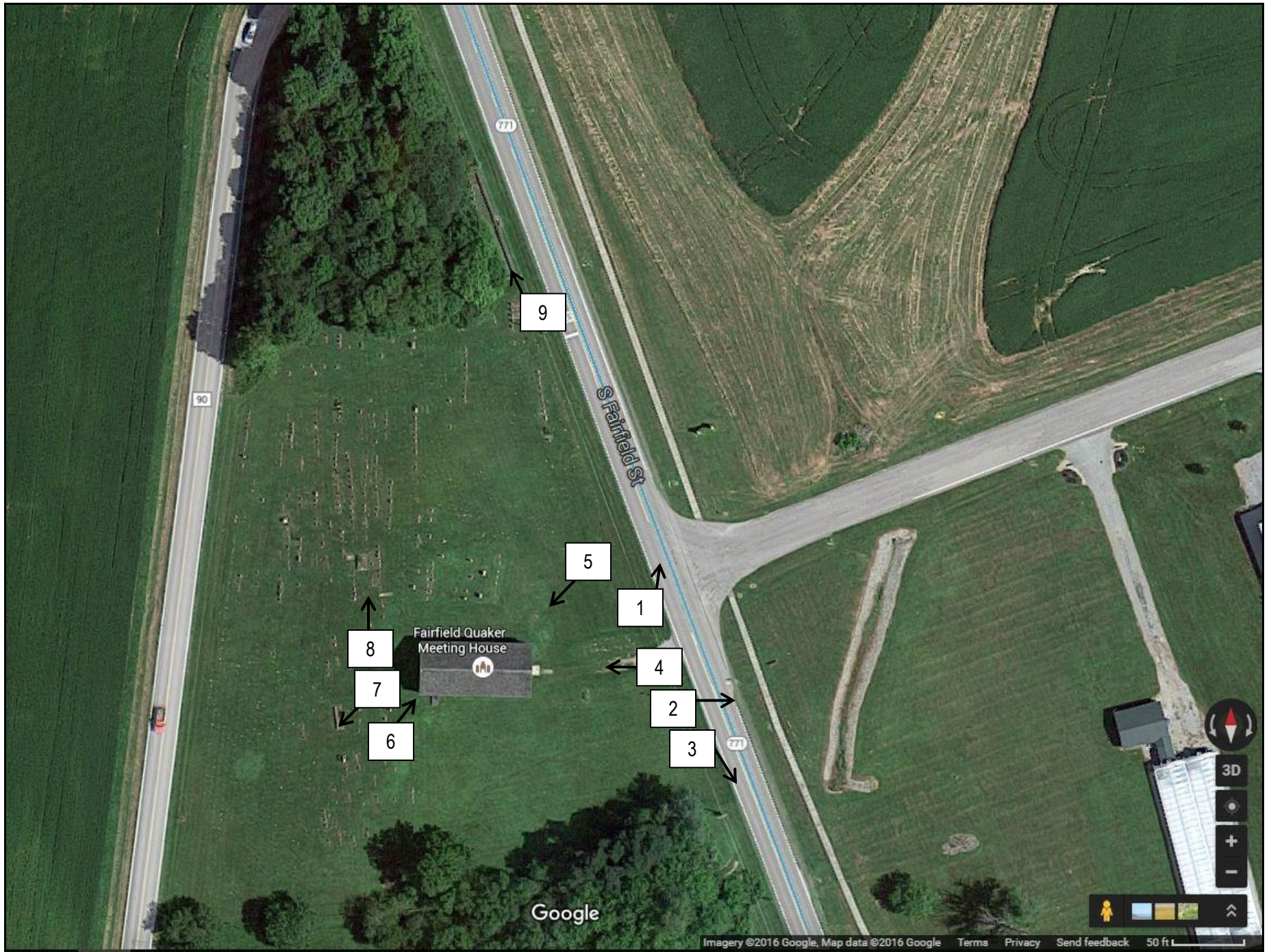


Figure 10: 2015 Google aerial map identifying the architectural location numbers assigned to history/architecture resources within the APE

APPENDIX B: Photographs



Photographic Key – Part 1 of 5



Photographic Key – Part 2 of 5



Photographic Key – Part 3 of 5



Photographic Key – Part 4 of 5



Photographic Key – Part 5 of 5



Photo 1: View of Leesburg Industrial Park facing north from the west side of SR 771 at Industrial Drive



Photo 2: View of architectural location (AL) 1 facing east from the west side of SR 771 at the entrance of AL 2 (HIG-00223-01) and AL 3 (OGS 5194)



Photo 3: View of SR 771 facing south from the west side of SR 771 at the entrance to AL 2 (HIG-00223-01) and AL 3 (OGS 5194)



Photo 4: East facade of AL 2 (HIG-00223-01)



Photo 5: East and north facades of AL 2 (HIG-00223-01)



Photo 6: West and south facades of AL 2 (HIG-00223-01)



Photo 7: View of AL 3 (OGS 5194) facing southwest from the southwest corner of AL 2 (HIG-00223-01)



Photo 8: View of AL 3 (OGS 5194) facing north from the west side of AL 2 (HIG-00223-01)



Photo 9: View, facing north along the west side of SR 771, of a walled section at the northern edge of AL 3 (OGS 5194)



Photo 10: View of the Leesburg Industrial Park facing south from Lovers Lane



Photo 11: View facing south along SR 771, from north of Lovers Lane and outside the APE, to show that changes in elevation prevent views of the Leesburg Industrial Park



Photo 12: Facing north from Lovers Lane and showing the south and east facades of AL 4



Photo 13: Facing northeast from Lovers Lane and showing the garage associated with AL 4



Photo 14: Facing east along Lovers Lane from SR 771 and showing AL 7 and AL 8



Photo 15: Facing north from Kimberly Street and showing AL 5 and AL 9



Photo 16: Facing north and showing AL 5 and AL 6



Photo 17: View of the Leesburg Industrial Park site facing south from Lovers Lane east of Kimberly Street



Photo 18: Facing north from Lovers Lane, view of house associated with AL 10



Photo 19: Facing north from Lovers Lane, view of outbuildings associated with AL 10



Photo 20: Facing south from Lovers Lane, view of AL 11



Photo 21: Facing south from Lovers Lane, view of AL 12



Photo 22: Facing south from Lovers Lane, view of AL 13



Photo 23: At the eastern edge of the APE, facing southwest from Lovers Lane towards the Leesburg Industrial Park



Photo 24: Facing south and showing AL 15



Photo 25: Facing north from AL 15, on the west side of SR 771, towards the Leesburg Industrial Park



Photo 26: Facing west from SR 771 and showing AL 14 (Source: Google images, 2016)



Photo 27: Facing northeast from SR 771 and showing the house associated with AL 16



Photo 28: Facing northeast from SR 771 and showing AL 16